



FLAIL MOWER EF USER MANUAL



P. de Heus en Zonen Greup B.V.
Stougjesdijk 153
3271 KB Mijnsheerenland
The Netherlands
Tel: +31 (0) 18 66 12 333
E-mail: info@boxeragri.nl



ENG | ENGLISH

TRANSLATION OF THE ORIGINAL MANUAL



1.	SAFETY PRECAUTIONS	4
1.1	Safety First	4
1.2	General Safety	4
1.3	Operating Safety	5
1.4	Storage Safety	5
1.5	Maintenance Safety	6
1.6	Safety & Model Decals	8
2.	PRODUCT SPECIFICATIONS	10
2.1	Implement Specifications	10
2.2	Identification of the implement	11
3.	OPERATION	12
3.1	Checking Before Operating	12
3.2	Adjustments	12
3.3	Drive Belt Adjustment	13
3.4	Starting Up	14
3.5	Hydraulic Connection	15
3.6	Greasing and Lubrication	15
4.	SERVICE AND MAINTENANCE	16
4.1	Service	16
4.2	Maintenance	16
5.	STORAGE	19
5.1	Operation After Storage	19
6.	TROUBLESHOOTING	20
7.	PARTS LISTS - EFGC MODEL	21
7.1	Flail Mower Assembly	21
7.2	Blade Axle Subassembly	24
7.3	Gearbox Assembly	25
8.	PARTS LISTS - EFGCH MODEL	26
8.1	Flail Mower Assembly	26
8.2	Blade Axle Subassembly	29
8.3	Gearbox Assembly	30
9.	CE DECLARATION OF CONFORMITY	31

1. SAFETY PRECAUTIONS



WARNING

Before operating the Flail mower, read the following safety instructions. Failure to comply with these warnings may result in serious injury or death.

1.1 Safety First

YOU are responsible for the SAFE operation and maintenance of your Flail mower. YOU must ensure that you and anyone else who is going to operate, maintain or work around the Flail mower is familiar with the operating and maintenance procedures and related SAFETY information contained in this manual. This manual will take you step-by-step through your working day and alert you to all good safety practices that should be adhered to while operating the Flail mower.

Remember, YOU are the key to safety. Good safety practices not only protect you but also the people around you. Make these practices a working part of your safety program. Be certain that EVERYONE operating this equipment is familiar with the recommended operating and maintenance procedures and follows all the safety precautions. Most accidents can be prevented. Do not risk injury or death by ignoring good safety practices.

- Flail mower owners must give operating instructions to operators or employees before allowing them to operate the machine.
- The most important safety feature on this equipment is a SAFE operator. It is the operator's responsibility to read and understand ALL Safety and Operating instructions in the manual and to follow these. All accidents can be avoided.
- A person who has not read and understood all operating and safety instructions is not qualified to operate the machine. An untrained operator jeopardies himself and bystanders to possible serious injury or death.
- Do not modify the equipment in any way. Unauthorized modification may weaken the function and/or safety and could affect the life of the equipment.
- Think SAFETY! Work SAFELY!

1.2 General Safety

1. Read the operator's Manual and all safety signs carefully before operating, maintaining, adjusting or removing the Flail mower.
2. Do not allow passengers to ride on the Flail mower
3. Operate only at safe distance from bystanders. Clear the area of people, especially small children, before starting.
4. Stop PTO before dismounting tractor.
5. Keep feet and hands from under Flail mower at all times.
6. Keep all shields in place. If shield removal becomes necessary for repairs, replace the shield prior to use.
7. Do not stay between the tractor and the Flail mower.
8. Do not approach the Flail mower until all motion has stopped.
9. All rotary blades have the ability to discharge objects at high speeds, which could result in serious injury to bystanders or passers-by, use with extreme caution.
10. Place all controls in neutral, stop tractor engine, set park brake, remove ignition key and wait for all moving parts to stop before servicing, adjusting, repairing, attaching or removing.



-
11. Review safety related items annually with all personnel who will operate or maintain the Flail mower.
 12. Do not operate machine if you feel unwell or physically unfit, in which case you should stop working.
 13. This machine was designed with safety very much in mind. However, there is no real substitute for caution and attention in preventing accidents. Once an accident has happened, it is too late to think about what you should have done.
 14. Use a tractor equipped with a Roll Over Protective Structure (ROPS). Always wear your seat belt. Serious injury or even death could result from falling off the tractor – particularly during a turnover when the operator could be pinned under the ROPS or the tractor.
 15. Never exceed the limits of a piece of machinery. If its ability to do a job, or to do so safely, is in question – DON'T TRY IT.
 16. Clear working area of stones, branches or hidden obstacles that might be hooked or snagged, causing injury or damage.

1.3 Operating Safety

1. Read and understand the Operator's Manual and all safety signs before operating, servicing, adjusting, repairing or removing.
2. Do not allow riders.
3. Install and secure all guards and shields before starting or operating.
4. Keep hands, feet, hair and clothing away from moving parts.
5. Place all controls in neutral, stop tractor engine, set park brake, remove ignition key and wait for all moving parts to stop before servicing, adjusting, repairing, attaching or removing.
6. Place all tractor and machine controls in neutral before starting.
7. Never start or operate machine unless sitting on tractor seat.
8. Clear the area of bystanders, especially small children, before starting.
9. Stay away from PTO shaft and machine when engaging PTO. Keep others away.
10. Use warning lights on tractor when transporting.
11. Do not put hands or feet under machine while tractor engine or machine is running.
12. Do not operate Flail mower in the raised position.
13. Objects can be thrown out from under machine with sufficient force to severely injure people. Stay away from machine when it is running. Keep others away.
14. Always know what you are cutting. Never operate the Flail mower in an area that has hidden obstacles. Remove sticks, stones, wire or other objects from working area before starting.
15. Review safety instructions with all operators annually.

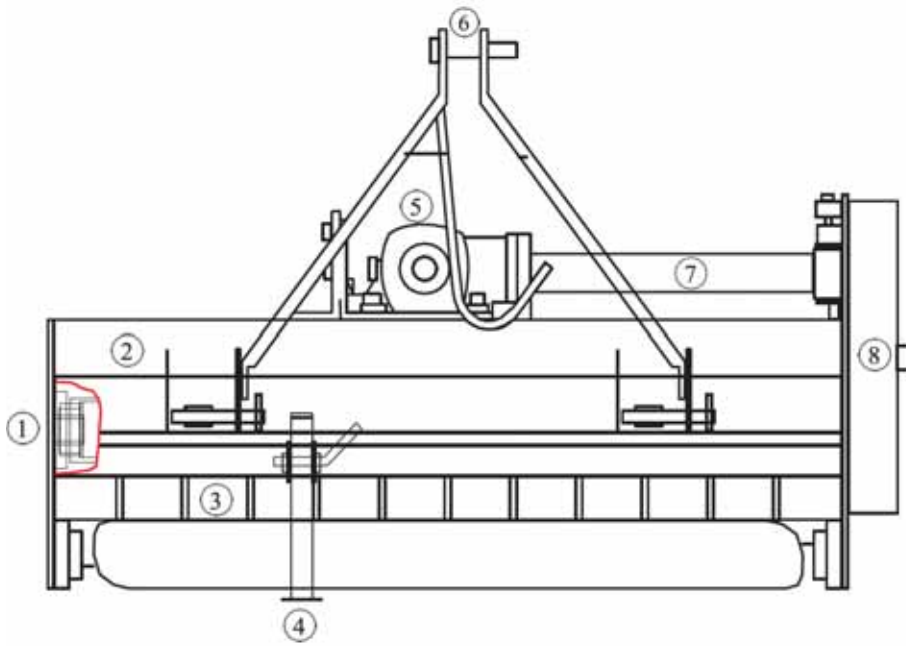
1.4 Storage Safety

1. Store the machine in an area away from human activity.
2. Do not permit children to play on or around the stored machine.
3. Store the machine in a dry, level area.
4. Clean grease and oil as required and protect it from the elements.

1.5 Maintenance Safety

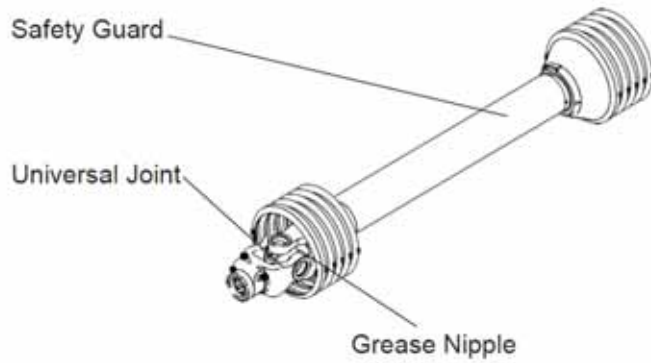
1. Good maintenance is your responsibility. Poor maintenance is an invitation to trouble.
2. Follow good shop practices.
3. Keep service area clean and dry.
4. Be sure electrical outlets and tools are properly grounded.
5. Use adequate light for the job at hand.
6. Make sure there is plenty of ventilation. Never operate the engine of the tractor in a closed building. The exhaust fumes may cause asphyxiation.
7. Before working on this machine, shut off the engine, set the brakes, and remove the ignition key.
8. Never work under equipment unless it is secured by a mechanical stand.
9. Use personal protection devices such as eye, hand and hearing protectors, when performing any service or maintenance work. Use heavy gloves when handling blades.
10. Only use genuine parts for service and maintenance.
11. A fire extinguisher and first aid kit should be kept readily accessible while performing maintenance on this equipment.
12. Periodically tighten all bolts, nuts and screws and check that all pins are properly installed to ensure unit is in a safe condition.
13. When completing a maintenance or service function, make sure all safety shields and devices are installed before placing machine in service.





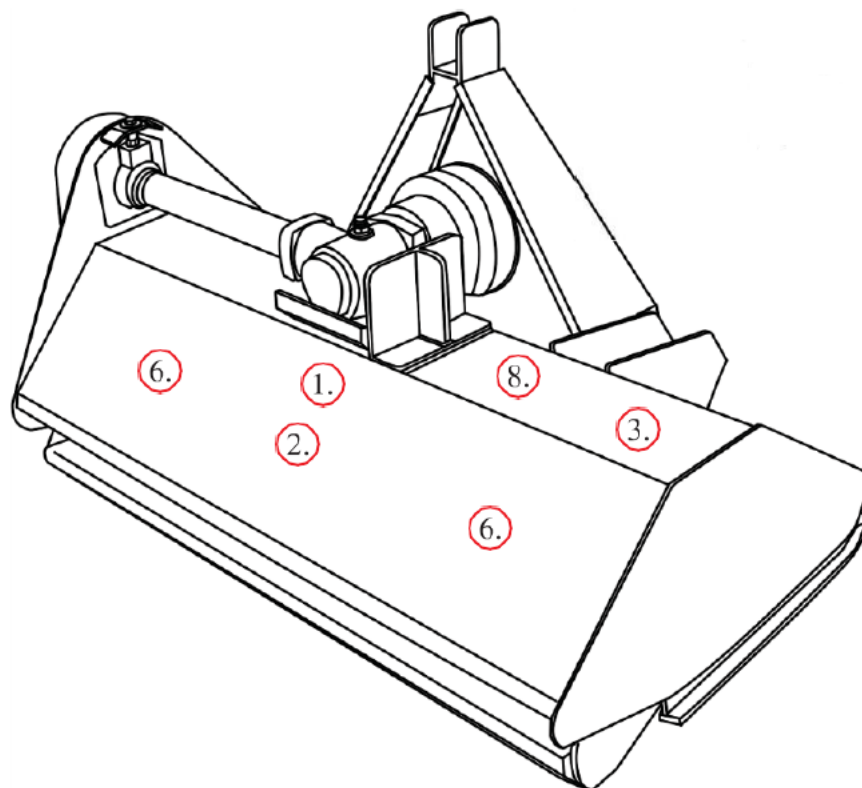
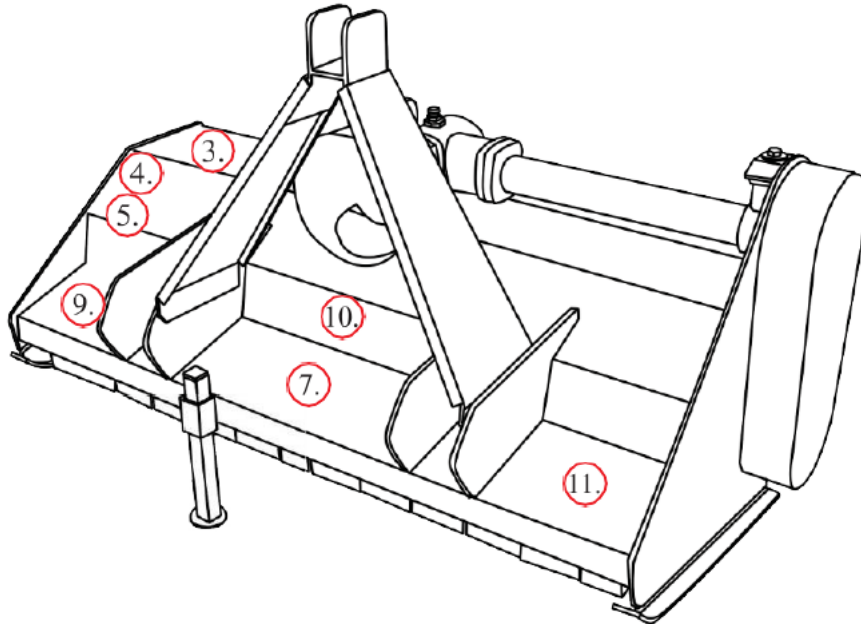
1.	Blade axle
2.	Blade axle cover
3.	Combined fender
4.	Stand
5.	Gear box
6.	Top Link Bracket
7.	Transmission shaft
8.	Belt & Pulley Cover

PTO Shaft



1.6 Safety & Model Decals



The position of safety decals is shown in the illustrations below. Good safety requires that you familiarize yourself with the various safety signs, and increase your SAFETY AWARENESS.





2. PRODUCT SPECIFICATIONS

2.1 Implement Specifications

Model	EF-95	EF-115	EF-135	EF-175
Tractor (HP)	12-25	18-25	25-30	30-40
3.P.L	Cat-1	Cat-1	Cat-1	Cat-1
Length	1065	1265	1485	1885
Width	790	790	790	790
Height	845	845	845	845
Weight (kg)	145	180	215	275
Cutting Width	950	1115	1315	1715
PTO (r/min)	540	540	540	540
Gear Box (HP)	30	50	50	50
	15	20	24	28
	30	40	48	56

USES

- Perfect for use after storms when debris is scattered throughout areas usually maintained with normal mowers
- Multi-purpose machines for mulching foliage and sticks
- Ideal for thick grass, sticks, undergrowth and light vine mulching
- Vegetable and pasture topping
- Roadside maintenance.



FEATURES

- Cutting height controlled by adjustable skids
- High strength mulching blades
- Belt driven
- Safety flaps to prevent debris being thrown
- Extra strong and designed with safety in mind
- Support leg for storage
- Solid hitch
- FC-120/160 models include hydraulic flail catcher.

2.2 Identification of the implement

An Identification plate is affixed to the frame of each implement. It contains the “CE” Certification brand and information about: the Manufacturer, Type, Serial Number, Weight and Year of Manufacture.

CE Identification Plate

	2008/42/EG		
Type :		Serial nr :	
Weight :		Year :	
	KG		
Boxer Agriculture Equipment B.V - Stougjesdijk 153 - 3271KB Mijnsheerenland - Holland			

3. OPERATION

3.1 Checking Before Operating

Before operating the machine, the following areas should be checked off:

1. Before starting up the machine, check and Lubricate all grease points, on the machine and drive shaft.
2. Use only an agricultural tractor with horsepower within limits of the implement.
3. Check that the machine is properly attached to the tractor. Be sure retainers are used on the mounting pins.
4. Be sure extra weights are mounted on the front of the tractor, if required.
5. Check the oil level in the gearbox. Add as required.
6. Check that the tractor PTO shaft turns freely and that the machine driving shaft can telescope easily.
7. Check the blades. Be sure they are not damaged or broken and swing freely in their mount. Repair or replace as required.
8. Check and tighten the blade bolts.
9. Check for entangled material in all rotating parts. Remove this material.
10. Install and secure all guards, doors and covers before starting.
11. Before installing the PTO. ensure the engine is stopped and the PTO shaft is in safe working order.
12. All other people shall leave the area before connecting the driving power from the tractor. Keep the output of the tractor at 540 RPM.
13. Before cleaning, repairing and lubricating the machine, stop the motor and take the key away with you.
14. When the PTO shaft is not connected with the tractor, support it through the frame to protect it from lying in the dirt.
15. Don't approach the machine when it is operating.

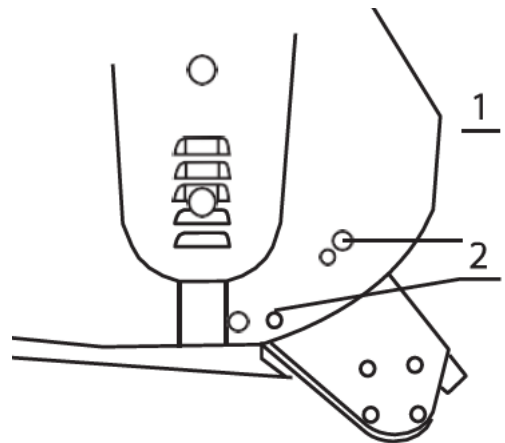
3.2 Adjustments

ADJUSTING THE HEIGHT

To get the most out of your flail mower, it should be set within the recommended height.

To save fuel and power, and reduce wear and tear, the cutting height must be regulated correctly.

When adjusting the working height, loosen screw (1), remove screw (2) on both sides; The roller height (see drawing) can be adjusted by aligning the selected hole in the roller support bracket at position 2. The lowest hole is the highest working height; put the screw (2) into the selected hole; tighten screw (1) and screw (2).



FLAIL MOWER ADJUSTMENT

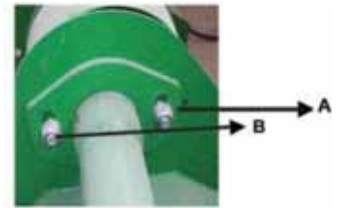
1. On a flat piece of ground, attach the Flail mower to the tractor using the three point linkage.
2. Use a solid adjustable top link.
3. Lower the three point linkage to its lowest position.
4. With the roller at the rear in contact with the ground, adjust the length of the top link so that the lower edge at the side of the flail mower is parallel with the ground.
5. Rotate the blade drum by hand so that a row of blades hang vertically towards the ground.

6. Measure the clearance between the bottom of the extended blades and the ground.
 - Minimum 50mm
 - Note: In rough or lumpy paddocks, the clearance needs to be increased to ensure that the blades don't impact the ground in operation.
7. Adjust the roller height to increase or decrease the blade clearance as required.
8. Go through steps 4 to 7 until the required clearance is achieved.

When the Flail mower has been set up with the required tolerances: operate the Flail mower with tractor in low range and the PTO delivering 540 RPM.

3.3 Drive Belt Adjustment

1. Loosen the Screw A and B that locks the support shaft and loosen the counter nut C. Loosen the screws that lock the gear box on the mounting plate D.
2. Adjust the drive belt tension. The correct belt tension is achieved when the belt can be deflected by the belt thickness about 10mm at the center point between the pulleys.
3. Align the gearbox so the drive shaft is parallel with the body.
4. Use a straight edge to make sure the belt pulleys are in line and running true. If misaligned, call your dealer or service agent for technical support.
5. Fit the safety covers and tighten the mounting bolts before operation.



Approx 10mm deflection

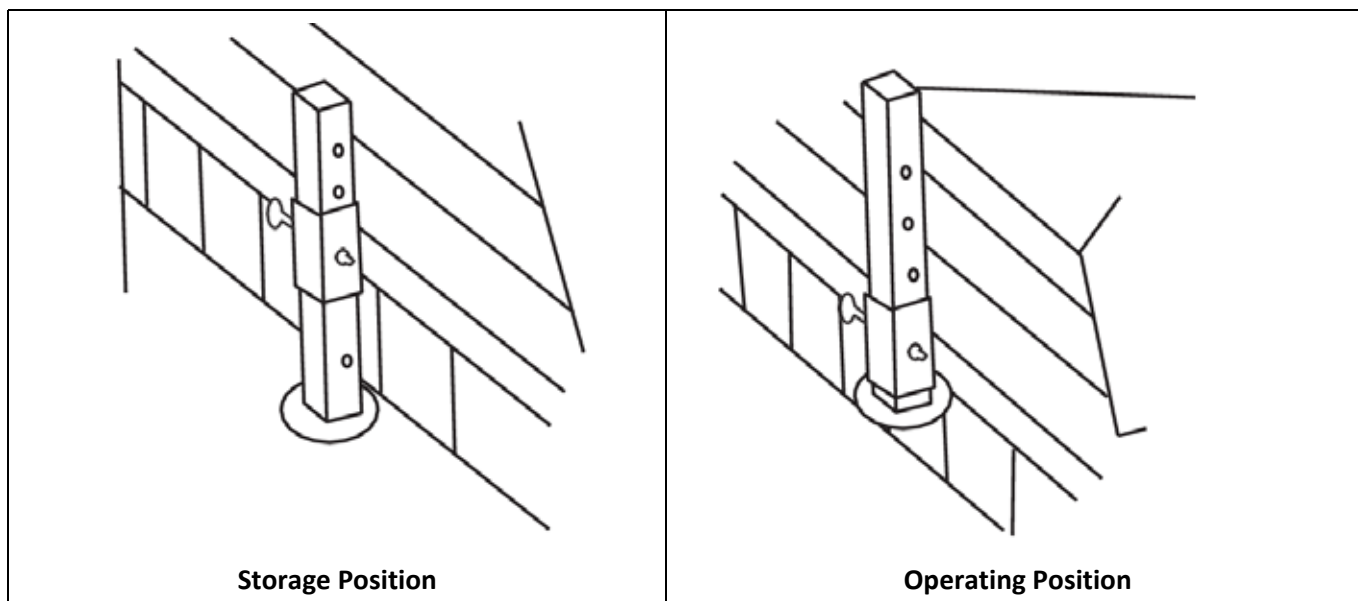


Align with a straight edge

3.4 Starting Up

Before starting the machine, check and adjust the following items:

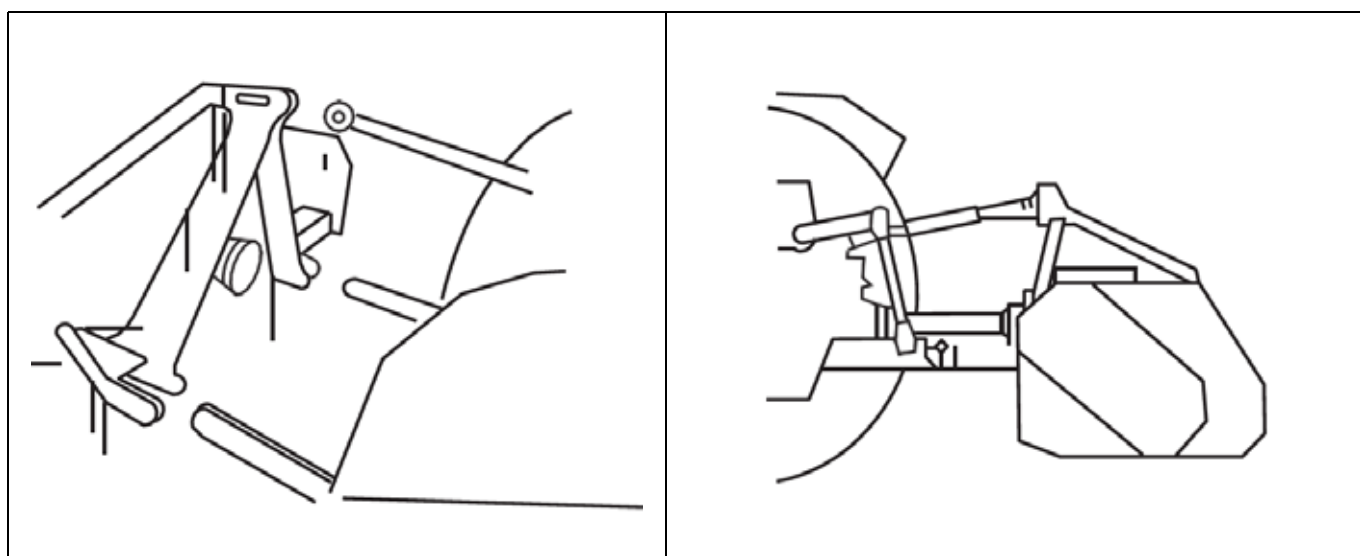
- Drive belt tension.
- Gearbox oil level.
- Grease nipples on bearings and PTO shaft.
- All bolts, nuts and screws.



In order to keep the machine stable, lower the adjustment stand when the machine is stopped (see above drawing). Follow all safety precautions detailed in this manual.

The machine is equipped with a standard category one, three point linkage.

Back the tractor into position in front of the flail mower. Lower the tractor hydraulic lift arms. Turn the tractor off. Maneuver the implement by hand and attach the lower link arms to the lower link pin. Ensure they are secured with lynch pin. Attach the top link to the top link bracket. Adjust the lower link sway chains to allow minimal lateral movement. Attach the PTO shaft to the tractor PTO ensuring it has been cut to the required length.



3.5 Hydraulic Connection

- Switch the engine off, set the handbrake and remove the ignition key. Push the hydraulic lever to release pressure at the remotes. Connect the implement's hydraulic hoses to the remotes using the quick couplers, having checked the quick couplers are clean and in good condition.
- Start the engine and activate the hydraulics to check the connection. Check there are no oil leaks at the connection or the implement.
- Before disconnecting, stop the engine and move the remotes lever back and forth to release the hydraulic oil pressure as previously mentioned.

3.6 Greasing and Lubrication

EACH 4 HOURS OF WORK

- Check and tighten nuts and bolts.
- Grease with lithium based grease when it is indicated by the symbol GREASE.

AFTER 50 HR OF WORK

Check and fill the gearbox to the required level, using oil type SAE 90 EP API GL4.

EACH 100 HR OF WORK

Check the gearbox oil level. Replace as required.



4. SERVICE AND MAINTENANCE

4.1 Service

FLUIDS AND LUBRICANTS

Grease: Use multi-purpose lithium based grease.

Gear Box Oil: Use SAE 90 Gear oil.

Storing Lubricants: Your machine can operate at top efficiency only if clean lubricants are used. Use clean containers to handle all lubricants. Store them in an area protected from dust, moisture and other contaminants.

GREASING

1. Use a hand-held grease gun for all greasing.
2. Wipe grease nipple with a clean cloth before greasing, to avoid injecting dirt and grit.
3. Replace broken nipples immediately.
4. If nipples will not take grease, remove and clean thoroughly. Also clean lubricant passageway. Replace nipple if necessary.

4.2 Maintenance

The period recommended is based on normal operating conditions. Severe or unusual conditions may require more frequent maintenance.

8 HOURS OR DAILY MAINTENANCE

1. Check all nuts and bolts, tighten as required.
2. Check the blade and blade bolts every day and replace the damaged parts. Don't install damaged, worn and unbalanced blade. Replace sleeves as they become worn.



NOTE

The operator should put on gloves and use suitable tools before changing blade.

3. Check the oil in gearbox. Fill up to line if necessary.
4. Pump grease into each grease nipple three to five times.
5. Clean the implement; remove grass and mud.

SEASON MAINTENANCE

1. Check the machine as in the terms of daily maintenance.
2. Check the oil in gearbox; replace it if it is contaminated.
3. Check the blade spindles for wear and tear. If worn, disassemble and clean them and replace them if it is necessary, grease as required.

ANNUAL MAINTENANCE

1. Thoroughly clean mud and grass off the machine.
2. Check and clean blade axles. Replace seals and grease as required.
3. Check all blades, replace them if they are worn or damaged.
4. Repair or replace the side skirts back to their original size and shape. Replace damaged or broken protective devices.

GEAR BOX MAINTENANCE

The oil should be drained out and replaced after the first 50 hours of operation. Then the oil should be changed every 250 hours, or at least once a year.

Drain oil from the gearbox thoroughly. Check and clean it. Fill with new gear oil up to the dedicated oil level.

The draining procedure is as follows: remove the draining bolt under the gear box, so that the oil drains off. After the oil is drained out, put the plug back and fill with gear oil up to the dedicated oil level.

	8hrs/Daily	50hrs/Weekly	Annually
Lubricate PTO Shaft	x	x	x
Lubricate caster wheels	x	x	x
Lubricate blade spindle	x	x	x
Check gear box oil level		x	x
Clean machine			x
Lubricate and clean PTO shaft cover			x

PTO SHAFT MAINTENANCE

The PTO shaft is designed to telescope to allow for dimensional changes as the machine goes through its operating range. A tubular guard encloses the driving components and is designed to turn relative to the driving components. The shaft should telescope easily and the guard turn freely on the shaft at all times. Annual disassembly, cleaning and lubrication is recommended to insure that all components function as intended. To maintain the shaft, follow this procedure:

1. Remove the shaft from the machine.
2. Pull shaft apart.
3. Use a screwdriver to pry the tabs out of the sleeves on each end.
4. Pull the shaft out of the plastic tubular guard.
5. Use a solvent to clean the male and female portions of the telescoping ends.
6. Apply a light coat of grease to each end.
7. Clean the grooves on each end where the tabs are located. Clean each tab also.
8. Apply a light coat of grease to each groove.
9. Insert the shaft into its respective guard and align the slots with the groove.
10. Insert the tabs through the slots and seat in the groove.
11. Check that each guard turns freely on the shaft.
12. Assemble the shaft.
13. Check that the shaft telescopes easily.
14. Replace any components that are damaged or worn.
15. Install the shaft on the machine.

GEAR BOX MAINTENANCE

The gearbox used on the Flail mower will give many years of trouble-free service with minimal maintenance requirements. Maintain the gearbox by following this procedure:

Oil Level

- Remove the level plug from the rear or side of the gearbox.
- Add oil through the filler plug located on top of gearbox until oil comes out of the level plug.
- Add through the level plug if required.
- If gearbox has a dipstick on filler plug, then fill to indicator mark.



NOTE

Check the oil level only when the unit is cold and the machine is on the level.

5. STORAGE

- Clean the machine inside and out so as to avoid corrosion.
- Don't spray water on the rolling bearing if you clean the machine with high pressure sprayer.
- Check and clean the universal joint, driving belt press roller, or replace them if they are not in good condition.
- Spread oil on all parts required.
- Recoat the parts rubbed and damaged for anti-corrosion.
- Store the machine in a dry, level area.

5.1 Operation After Storage

Before the machine is started up, check the following items regularly:

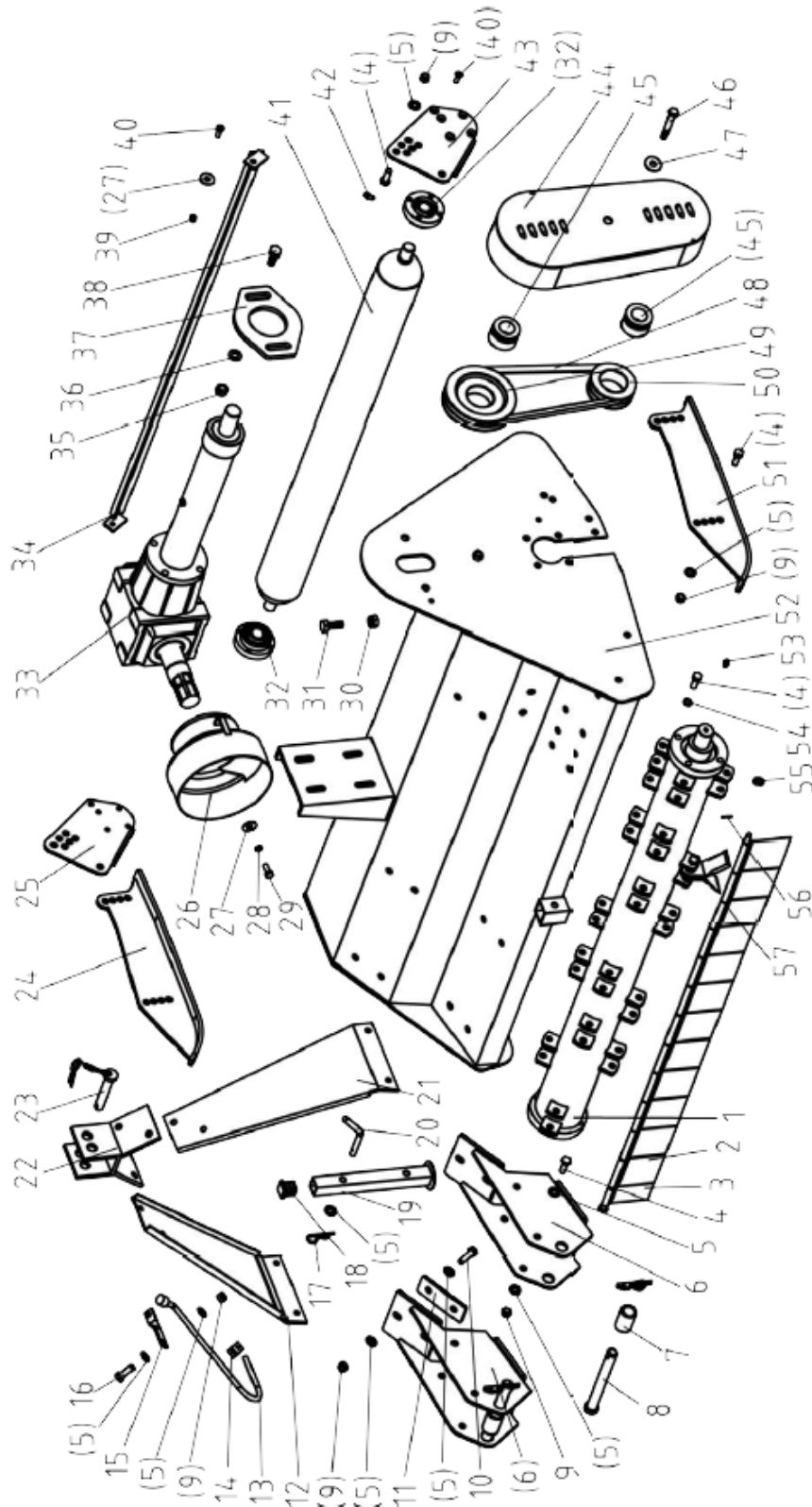
- Check oil level and add if required.
- Check and tighten all screws and nuts.
- Check the blade condition. Replace as required.
- Check the air hole on the gearbox. If it is blocked, clean or open the hole with compressed air.
- Don't spread oil or grease on the driving belts. If there is oil or grease on the belts, wipe the belts, to avoid slippage and premature wear.
- Check all moving parts and replace them if necessary.
- Check the protective covers are complete and operate correctly.

6. TROUBLESHOOTING

FAILURE	CAUSE	SOLUTION	LEVEL OF DANGER
Excessive vibration of the machine	Broken flails	Replace broken flails	Flails can be replaced by a competent operator. In the other cases, replacement must be done by specialised staff.
	Broken rotor support	Replace rotor support with original parts	
	Broken driving support shaft	Replace shaft support with original parts	
	The worst: bent rotor	Replace rotor with original parts	
The grass is not cut	Broken flails	Replace flails	For replacement of flails, adjustment or replacement belts and fixing lock joints, see paragraph relating to maintenance.
	Belt slipping	Adjust belt tension	
	Broken belts	Replace belts	
	Pulleys slipping on shafts	Fix pulley lock joints	
	Broken gear box	Repairing or replacement of gear box	
Clogging of hammers/knives	Rotor speed is too low	Increase rotor speed	
Excessive wear of hammers/knives	Rotor speed is too high	Decrease rotor speed	
Flail mower vibrates during works	Foreign matter stuck in between blades	Remove foreign matter	Secure flail mower on a mechanical stand before maintaining blades or rotor.
	Hammers/knives broken	Replace hammer/knives	
	Bolts of the rotor shaft support have come loose	Lock bolts	

7. PARTS LISTS - EFGC MODEL

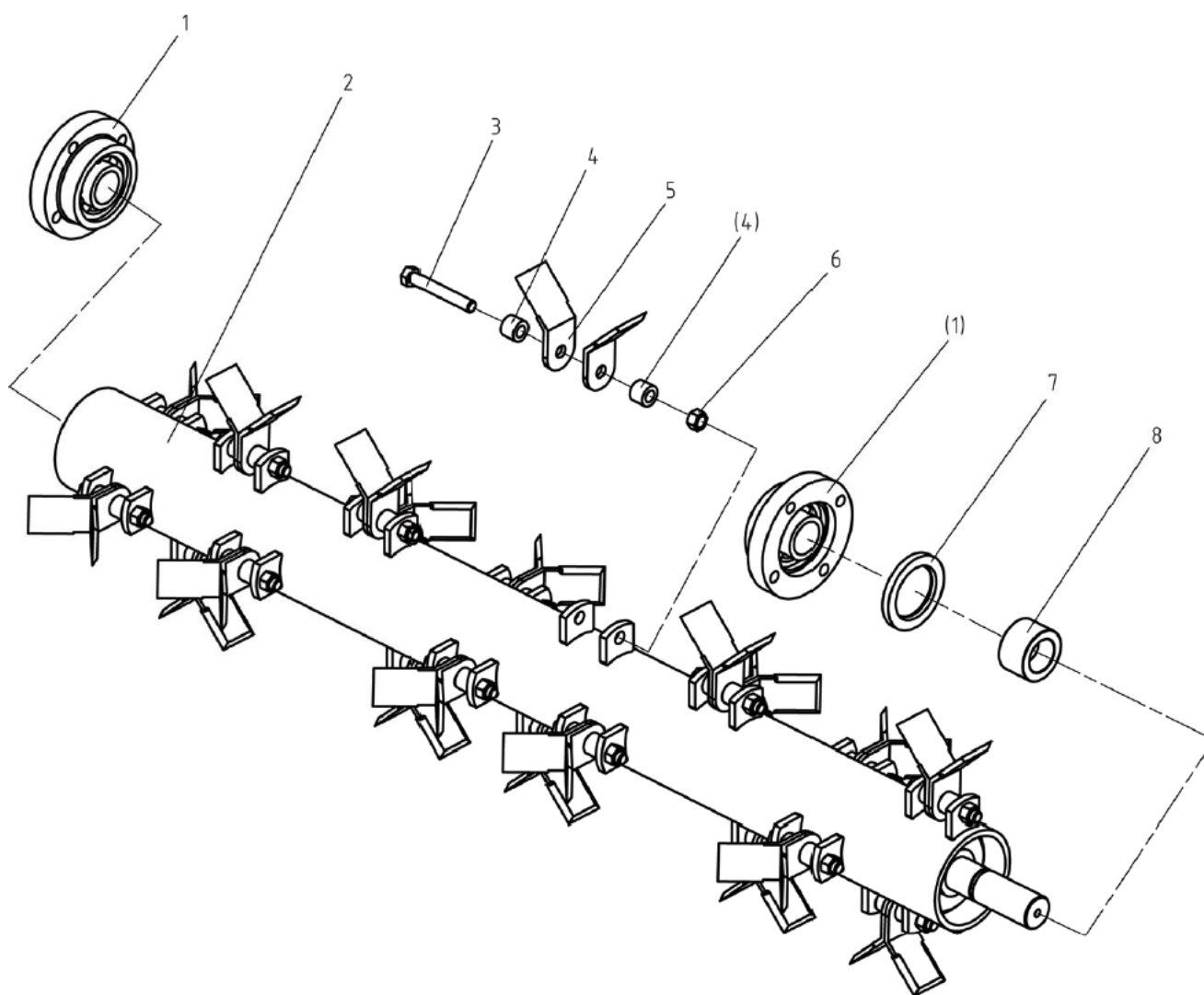
7.1 Flail Mower Assembly



No.	Part No.						Name & Specifications	QTY
	EFGC-105	EFGC-125	EFGC-135	EFGC-145	EFGC-155	EFGC-175		
1							Blade axle subassembly	1
2	EF100.00.122	EF100.00.122	EF100.00.122	EF100.00.122	EF100.00.122	EF100.00.122	Fender	13
3	EF100.00.121	EF100.00.121	EF100.00.121	EF100.00.121	EF100.00.121	EF100.00.121	Fender	1
4	GB5783-86	GB5783-86	GB5783-86	GB5783-86	GB5783-86	GB5783-86	Bolt M12x30	23
5	GB97.1-85	GB97.1-85	GB97.1-85	GB97.1-85	GB97.1-85	GB97.1-85	Plain washer 12	40
6	EFGC100.012	EFGC120.012	EFGC130.012	EFGC140.012	EFGC150.012	EFGC170.012	Hanging weldment	2
7	EF100.00.106	EF100.00.106	EF100.00.106	EF100.00.106	EF100.00.106	EF100.00.106	Spacer	2
8	EF100.00.014	EF100.00.014	EF100.00.014	EF100.00.014	EF100.00.014	EF100.00.014	Pin shaft weldment	2
9	GB6184-86	GB6184-86	GB6184-86	GB6184-86	GB6184-86	GB6184-86	Locking nut M12	44
10	GB5783-86	GB5783-86	GB5783-86	GB5783-86	GB5783-86	GB5783-86	Bolt M12x40	8
11	EFGC100.101	EFGC120.101	EFGC130.101	EFGC140.101	EFGC150.101	EFGC170.101	Splint	4
12	EF100.00.016	EF100.00.016	EF100.00.016	EF100.00.016	EF100.00.016	EF100.00.016	Suspension plate (L)	1
13	EF100.00.017	EF100.00.017	EF100.00.017	EF100.00.017	EF100.00.017	EF100.00.017	Hook	1
14	EF100.00.105	EF100.00.105	EF100.00.105	EF100.00.105	EF100.00.105	EF100.00.105	Clamp for hook	2
15	EF100.00.107	EF100.00.107	EF100.00.107	EF100.00.107	EF100.00.107	EF100.00.107	Fixing plate	1
16	GB5783-86	GB5783-86	GB5783-86	GB5783-86	GB5783-86	GB5783-86	Bolt M12x35	5
17							R pin	1
18	EF100.00.117	EF100.00.117	EF100.00.117	EF100.00.117	EF100.00.117	EF100.00.117	Cover	1
19	EF100.00.027	EF100.00.027	EF100.00.027	EF100.00.027	EF100.00.027	EF100.00.027	Supporting frame	1
20	EF100.00.111	EF100.00.111	EF100.00.111	EF100.00.111	EF100.00.111	EF100.00.111	Bent pin	1
21	EF100.00.020	EF100.00.020	EF100.00.020	EF100.00.020	EF100.00.020	EF100.00.020	Suspension plate (R)	1
22	EF100.00.018	EF100.00.018	EF100.00.018	EF100.00.018	EF100.00.018	EF100.00.018	Bracket weldment	1
23	EF100.00.019	EF100.00.019	EF100.00.019	EF100.00.019	EF100.00.019	EF100.00.019	Pin shaft weldment	1
24	EFGC100.013	EFGC120.013	EFGC130.013	EFGC140.013	EFGC150.013	EFGC170.013	Base plate (L)	1
25	EFG120.102	EFG120.102	EFG120.102	EFG120.102	EFG120.102	EFG120.102	Supporting for roller (L)	1
26	EF100.00.112	EF100.00.112	EF100.00.112	EF100.00.112	EF100.00.112	EF100.00.112	Guard shade	1
27	GB96-85	GB96-85	GB96-85	GB96-85	GB96-85	GB96-85	Plain washer 10	4
28	GB93-87	GB93-87	GB93-87	GB93-87	GB93-87	GB93-87	Spring washer 10	4
29	GB5783-86	GB5783-86	GB5783-86	GB5783-86	GB5783-86	GB5783-86	Bolt M10x25	4
30	GB6173-86	GB6173-86	GB6173-86	GB6173-86	GB6173-86	GB6173-86	Nut M16x1.5	1
31	GB5786-86	GB5786-86	GB5786-86	GB5786-86	GB5786-86	GB5786-86	Bolt M16x1.5x50	1
32	EF100.00.012	EF100.00.012	EF100.00.012	EF100.00.012	EF100.00.012	EF100.00.012	Bearing with flange UC205	2
33	EFGC100.015	EFGC120.015	EFGC130.015	EFGC140.015	EFGC150.015	EFGC170.015	Gear box assembly	1
34	EF100.00.024	EF120.00.024	EF130.00.024	EF140.00.024	EF150.00.024	EF170.00.024	Mud shield	1
35	GB6184-86	GB6184-86	GB6184-86	GB6184-86	GB6184-86	GB6184-86	Locking nut M14	2
36	GB97.1-85	GB97.1-85	GB97.1-85	GB97.1-85	GB97.1-85	GB97.1-85	Plain washer 14	2
37	EFGC120.102	EFGC120.102	EFGC120.102	EFGC120.102	EFGC120.102	EFGC120.102	Tension plate	1
38	GB5783-86	GB5783-86	GB5783-86	GB5783-86	GB5783-86	GB5783-86	Bolt M14x35	2
39	GB6184-86	GB6184-86	GB6184-86	GB6184-86	GB6184-86	GB6184-86	Locking nut M8	2
40	GB2673-86	GB2673-86	GB2673-86	GB2673-86	GB2673-86	GB2673-86	Hex.head bolt M8x25	10
41	EFG100.012	EFG120.012	EFG130.012	EFG140.012	EFG150.012	EFG170.012	Roller weldment	1
42	GB1152-89	GB1152-89	GB1152-89	GB1152-89	GB1152-89	GB1152-89	Oil cup M6	2
43	EFG120.101	EFG120.101	EFG120.101	EFG120.101	EFG120.101	EFG120.101	Supporting for roller (R)	1
44	EFGC120.016	EFGC120.016	EFGC120.016	EFGC120.016	EFGC120.016	EFGC120.016	Belt cover	1
45	JB/T7934Z3	JB/T7934Z3	JB/T7934Z3	JB/T7934Z3	JB/T7934Z3	JB/T7934Z3	Swellaible sleeve	2
46	GB5782-86	GB5782-86	GB5782-86	GB5782-86	GB5782-86	GB5782-86	Bolt M12x80	1
47	GB96-85	GB96-85	GB96-85	GB96-85	GB96-85	GB96-85	Plain washer 12	5

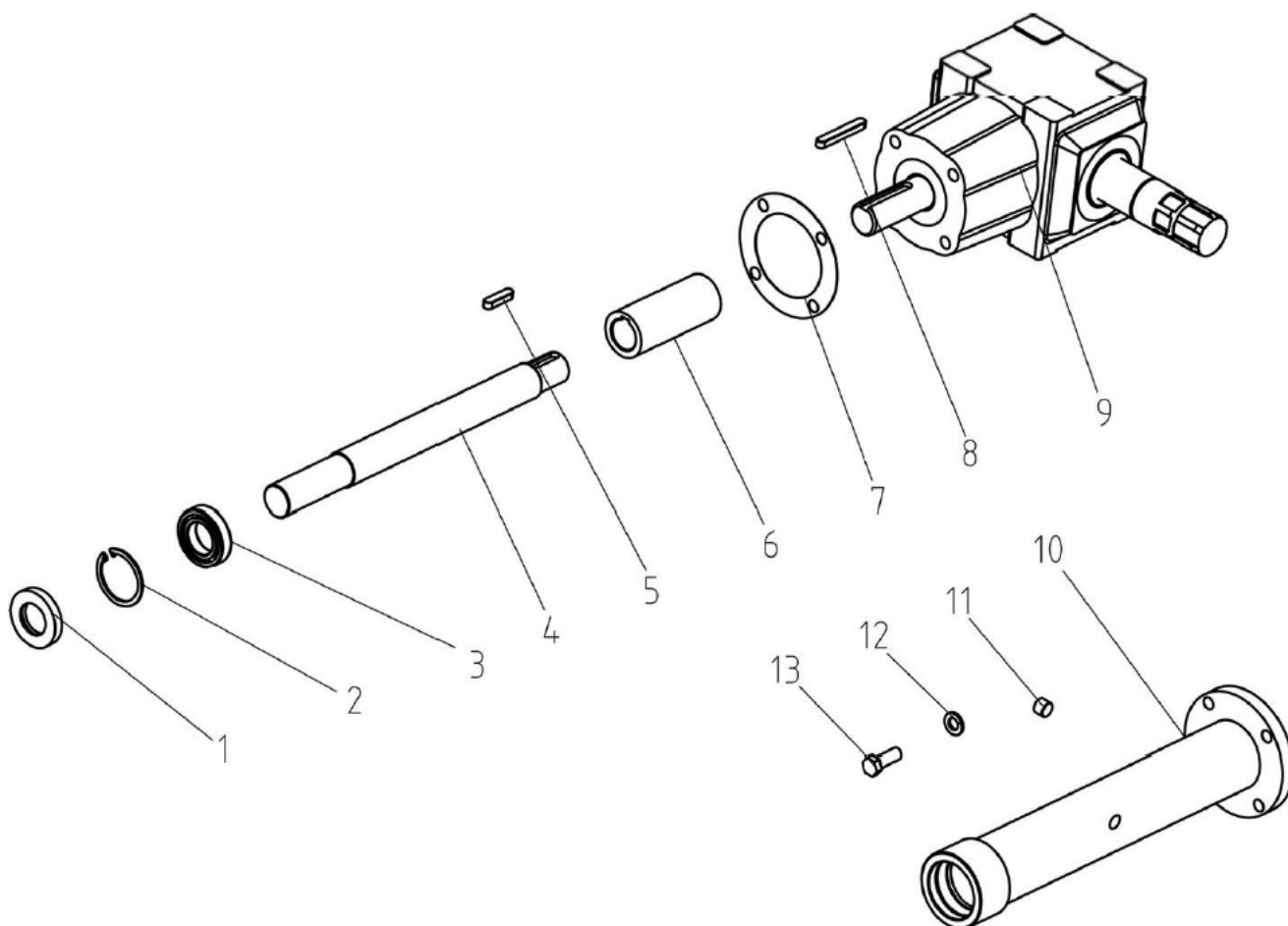
No.	Part No.						Name & Specifications	QTY
	EFGC-105	EFGC-125	EFGC-135	EFGC-145	EFGC-155	EFGC-175		
48	GB-T1154-97	GB-T1154-97	GB-T1154-97	GB-T1154-97	GB-T1154-97	GB-T1154-97	Strap A965	2
49	RK120.113	RK120.113	RK120.113	RK120.113	RK120.113	RK120.113	Big belt pulley	1
50	RK120.110	RK120.110	RK120.110	RK120.110	RK120.110	RK120.110	Small belt pulley	1
51	EFGC100.014	EFGC120.014	EFGC130.014	EFGC140.014	EFGC150.014	EFGC170.014	Base plate (R)	1
52	EFGC100.011	EFGC120.011	EFGC130.011	EFGC140.011	EFGC150.011	EFGC170.011	The cover weldment	1
53	GB1152-89	GB1152-89	GB1152-89	GB1152-89	GB1152-89	GB1152-89	Oil cup M8x1	2
54	GB93-87	GB93-87	GB93-87	GB93-87	GB93-87	GB93-87	Spring washer 12	12
55	GB97.1-85	GB97.1-85	GB97.1-85	GB97.1-85	GB97.1-85	GB97.1-85	Plain washer 10	18
56	GB879-86	GB879-86	GB879-86	GB879-86	GB879-86	GB879-86	Elastic cylindrical pin 4x22	2
57	EF100.00.123	EF120.00.123	EF130.00.123	EF140.00.123	EF150.00.123	EF170.00.123	Shaft for fender	1

7.2 Blade Axle Subassembly



No.	Part No.						Name & Specifications	QTY
	EFGC-105	EFGC-125	EFGC-135	EFGC-145	EFGC-155	EFGC-175		
1	UC207-Z	UC207-Z	UC207-Z	UC207-Z	UC207-Z	UC207-Z	Bearing with flange 90207	2
2	EFGC100.013	EFGC120.013	EFGC130.013	EFGC140.013	EFGC150.013	EFGC170.013	Blade axle weldment	1
3	GB5782-86	GB5782-86	GB5782-86	GB5782-86	GB5782-86	GB5782-86	Bolt M12x80	20
4	EF100.00.101	EF100.00.101	EF100.00.101	EF100.00.101	EF100.00.101	EF100.00.101	Sleeve	40
5	EF100.00.102	EF100.00.102	EF100.00.102	EF100.00.102	EF100.00.102	EF100.00.102	Blade	40
6	GB6184-86	GB6184-86	GB6184-86	GB6184-86	GB6184-86	GB6184-86	Locking nut M12	20
7	GB13871-94	GB13871-94	GB13871-94	GB13871-94	GB13871-94	GB13871-94	Oil seal FB55x80x8	1
8	RK120.109	RK120.109	RK120.109	RK120.109	RK120.109	RK120.109	Oil-sealing sleeve	1

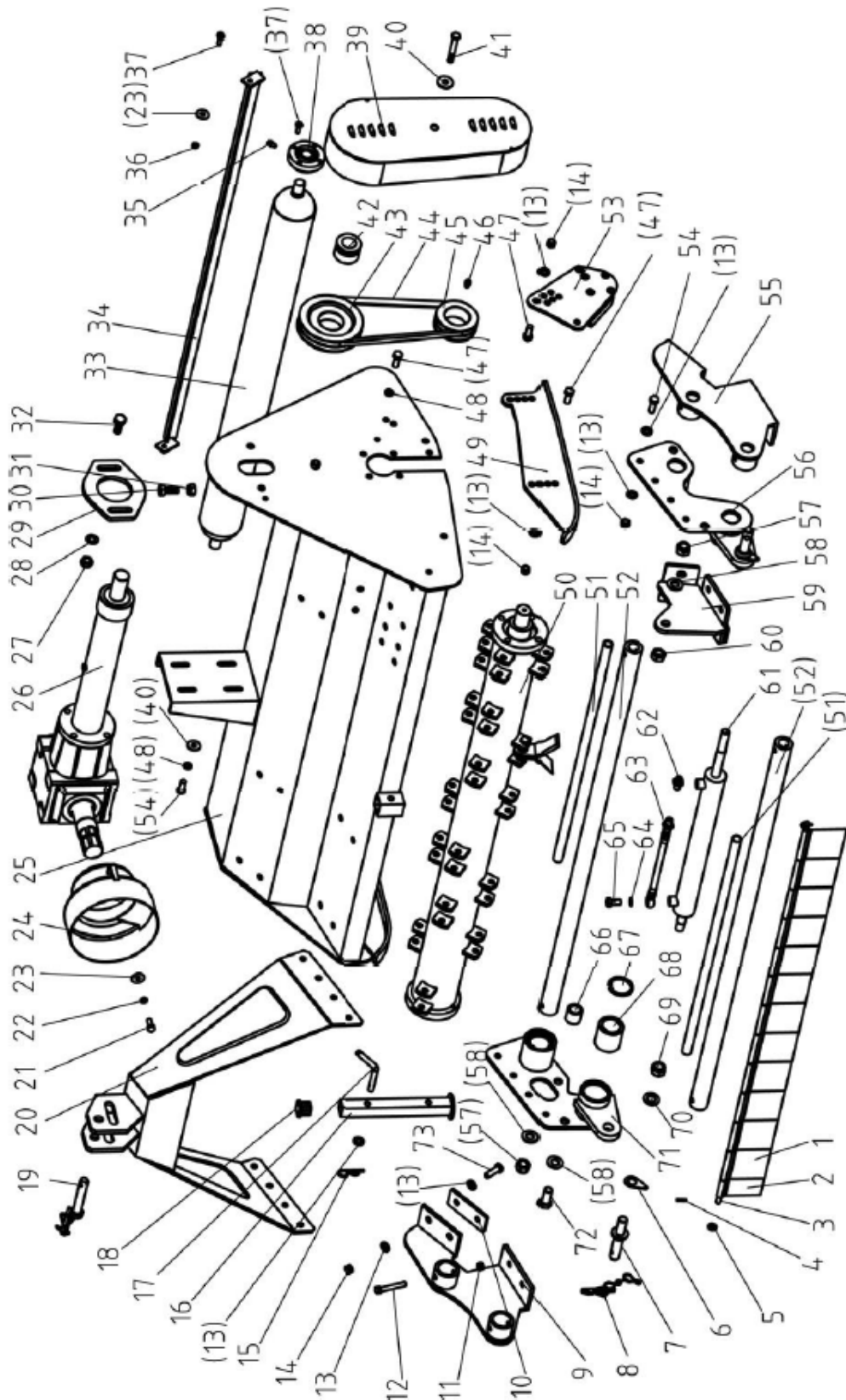
7.3 Gearbox Assembly



No.	Part No.						Name & Specifications	QTY
	EFGC-105	EFGC-125	EFGC-135	EFGC-145	EFGC-155	EFGC-175		
1	GB13871-94	GB13871-94	GB13871-94	GB13871-94	GB13871-94	GB13871-94	Oil seal 35×62×10	1
2	GB893.1-86	GB893.1-86	GB893.1-86	GB893.1-86	GB893.1-86	GB893.1-86	Circlip 62	1
3	GB/T276-94	GB/T276-94	GB/T276-94	GB/T276-94	GB/T276-94	GB/T276-94	Bearing 6007	1
4	EFGC100.133	EFGC120.133	EFGC130.133	EFGC140.133	EFGC150.133	EFGC170.133	Shaft	1
5	GB1096-79	GB1096-79	GB1096-79	GB1096-79	GB1096-79	GB1096-79	Key A10×40	1
6	EFGC120.132	EFGC120.132	EFGC120.132	EFGC120.132	EFGC120.132	EFGC120.132	Connected sleeve	1
7	EFGC120.131	EFGC120.131	EFGC120.131	EFGC120.131	EFGC120.131	EFGC120.131	Paper gasket	1
8	GB1096-79	GB1096-79	GB1096-79	GB1096-79	GB1096-79	GB1096-79	Key A10×70	1
9	XH50.300Z.02	XH50.300Z.02	XH50.300Z.02	XH50.300Z.02	XH50.300Z.02	XH50.300Z.02	Gearbox assembly	1
10	EFGC100.018	EFGC120.018	EFGC130.018	EFGC140.018	EFGC150.018	EFGC170.018	Shaft tube weldment	1
11	ZBT 32001.3-87	ZBT 32001.3-87	ZBT 32001.3-87	ZBT 32001.3-87	ZBT 32001.3-87	ZBT 32001.3-87	Retainer	2
12	GB93-87	GB93-87	GB93-87	GB93-87	GB93-87	GB93-87	Plain washer 12	4
13	GB5783-86	GB5783-86	GB5783-86	GB5783-86	GB5783-86	GB5783-86	Hex. head bolt M12×35	4

8. PARTS LISTS - EFGCH MODEL

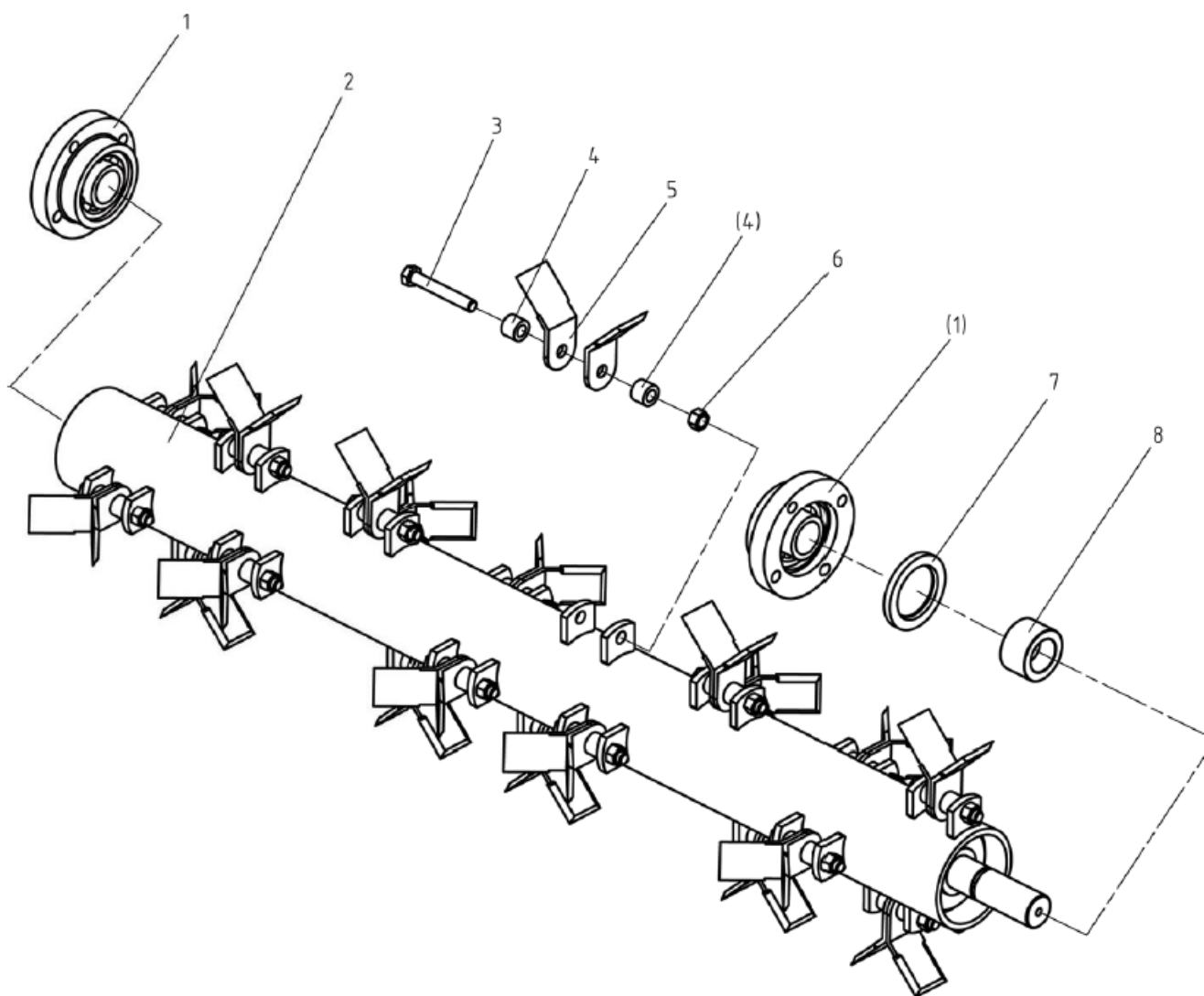
8.1 Flail Mower Assembly



No.	Part No.						Name & Specifications	QTY
	EFGCH-105	EFGCH-125	EFGCH-135	EFGCH-145	EFGCH-155	EFGCH-175		
1	EF100.00.122	EF100.00.122	EF100.00.122	EF100.00.122	EF100.00.122	EF100.00.122	Fender	13
2	EF100.00.121	EF100.00.121	EF100.00.121	EF100.00.121	EF100.00.121	EF100.00.121	Fender	1
3	EF100.00.123	EF120.00.123	EF130.00.123	EF140.00.123	EF150.00.123	EF170.00.123	Shaft for fender	1
4	GB879-86	GB879-86	GB879-86	GB879-86	GB879-86	GB879-86	Elastic cylindrical pin 4x22	2
5	GB97.1-85	GB97.1-85	GB97.1-85	GB97.1-85	GB97.1-85	GB97.1-85	Plain washer 10	18
6	FMR120.105	FMR120.105	FMR120.105	FMR120.105	FMR120.105	FMR120.105	Lockpin plate	2
7	FMR120.104	FMR120.104	FMR120.104	FMR120.104	FMR120.104	FMR120.104	Pin for lifting (D)	2
8	200.56.011-1	200.56.011-1	200.56.011-1	200.56.011-1	200.56.011-1	200.56.011-1	Lockpin	2
9	EFGCH120.018	EFGCH120.018	EFGCH120.018	EFGCH120.018	EFGCH120.018	EFGCH120.018	Connecting bracket (L)	1
10	EFGC120.101	EFGC120.101	EFGC120.101	EFGC120.101	EFGC120.101	EFGC120.101	Splint	7
11	GB6184-86	GB6184-86	GB6184-86	GB6184-86	GB6184-86	GB6184-86	Locking nut M10	4
12	GB5783-86	GB5783-86	GB5783-86	GB5783-86	GB5783-86	GB5783-86	Bolt M10x70	4
13	GB97.1-85	GB97.1-85	GB97.1-85	GB97.1-85	GB97.1-85	GB97.1-85	Plain washer 12	53
14	GB6184-86	GB6184-86	GB6184-86	GB6184-86	GB6184-86	GB6184-86	Locking nut M12	50
15			R pin			1		
16	EF100.00.027	EF100.00.027	EF100.00.027	EF100.00.027	EF100.00.027	EF100.00.027	Supporting frame	1
17	EF100.00.111	EF100.00.111	EF100.00.111	EF100.00.111	EF100.00.111	EF100.00.111	Bent pin	1
18	EF100.00.117	EF100.00.117	EF100.00.117	EF100.00.117	EF100.00.117	EF100.00.117	Cover	1
19	EF100.00.019	EF100.00.019	EF100.00.019	EF100.00.019	EF100.00.019	EF100.00.019	Pin shaft weldment	1
20	EFGCH120.016	EFGCH120.016	EFGCH120.016	EFGCH120.016	EFGCH120.016	EFGCH120.016	Hanging weldment	1
21	GB5783-86	GB5783-86	GB5783-86	GB5783-86	GB5783-86	GB5783-86	Bolt M10x25	4
22	GB93-87	GB93-87	GB93-87	GB93-87	GB93-87	GB93-87	Spring washer 12	4
23	GB96-85	GB96-85	GB96-85	GB96-85	GB96-85	GB96-85	Plain washer 10	4
24	EF100.00.112	EF100.00.112	EF100.00.112	EF100.00.112	EF100.00.112	EF100.00.112	Guard shade	1
25	EFGC100.011	EFGC120.011	EFGC130.011	EFGC140.011	EFGC150.011	EFGC170.011	The cover weldment	1
26	EFGC100.015	EFGC120.015	EFGC130.015	EFGC140.015	EFGC150.015	EFGC170.015	Gear box assembly	1
27	GB6184-86	GB6184-86	GB6184-86	GB6184-86	GB6184-86	GB6184-86	Locking nut M14	2
28	GB97.1-85	GB97.1-85	GB97.1-85	GB97.1-85	GB97.1-85	GB97.1-85	Plain washer 14	2
29	EFGC120.102	EFGC120.102	EFGC120.102	EFGC120.102	EFGC120.102	EFGC120.102	Tension plate	1
30	GB5786-86	GB5786-86	GB5786-86	GB5786-86	GB5786-86	GB5786-86	Bolt M16x1.5x50	1
31	GB6173-86	GB6173-86	GB6173-86	GB6173-86	GB6173-86	GB6173-86	Nut M16x1.5	1
32	GB5783-86	GB5783-86	GB5783-86	GB5783-86	GB5783-86	GB5783-86	Bolt M14x35	2
33	EFG100.012	EFG120.012	EFG130.012	EFG140.012	EFG150.012	EFG170.012	Roller weldment	1
34	EF100.00.024	EF120.00.024	EF130.00.024	EF140.00.024	EF150.00.024	EF170.00.024	Mud shield	1
35	GB1152-89	GB1152-89	GB1152-89	GB1152-89	GB1152-89	GB1152-89	Oil cup M6	2
36	GB6184-86	GB6184-86	GB6184-86	GB6184-86	GB6184-86	GB6184-86	Locking nut M8	2
37	GB2673-86	GB2673-86	GB2673-86	GB2673-86	GB2673-86	GB2673-86	Hex.head bolt M8x25	10
38	EF100.00.012	EF100.00.012	EF100.00.012	EF100.00.012	EF100.00.012	EF100.00.012	Bearing with flange UC205	2
39	EFGC120.016	EFGC120.016	EFGC120.016	EFGC120.016	EFGC120.016	EFGC120.016	Belt cover	1
40	GB96-85	GB96-85	GB96-85	GB96-85	GB96-85	GB96-85	Plain washer 12	5
41	GB5782-86	GB5782-86	GB5782-86	GB5782-86	GB5782-86	GB5782-86	Bolt M12x80	21
42	JB/T7934Z3	JB/T7934Z3	JB/T7934Z3	JB/T7934Z3	JB/T7934Z3	JB/T7934Z3	Swellaible sleeve	2
43	RK120.113	RK120.113	RK120.113	RK120.113	RK120.113	RK120.113	Big belt pulley	1

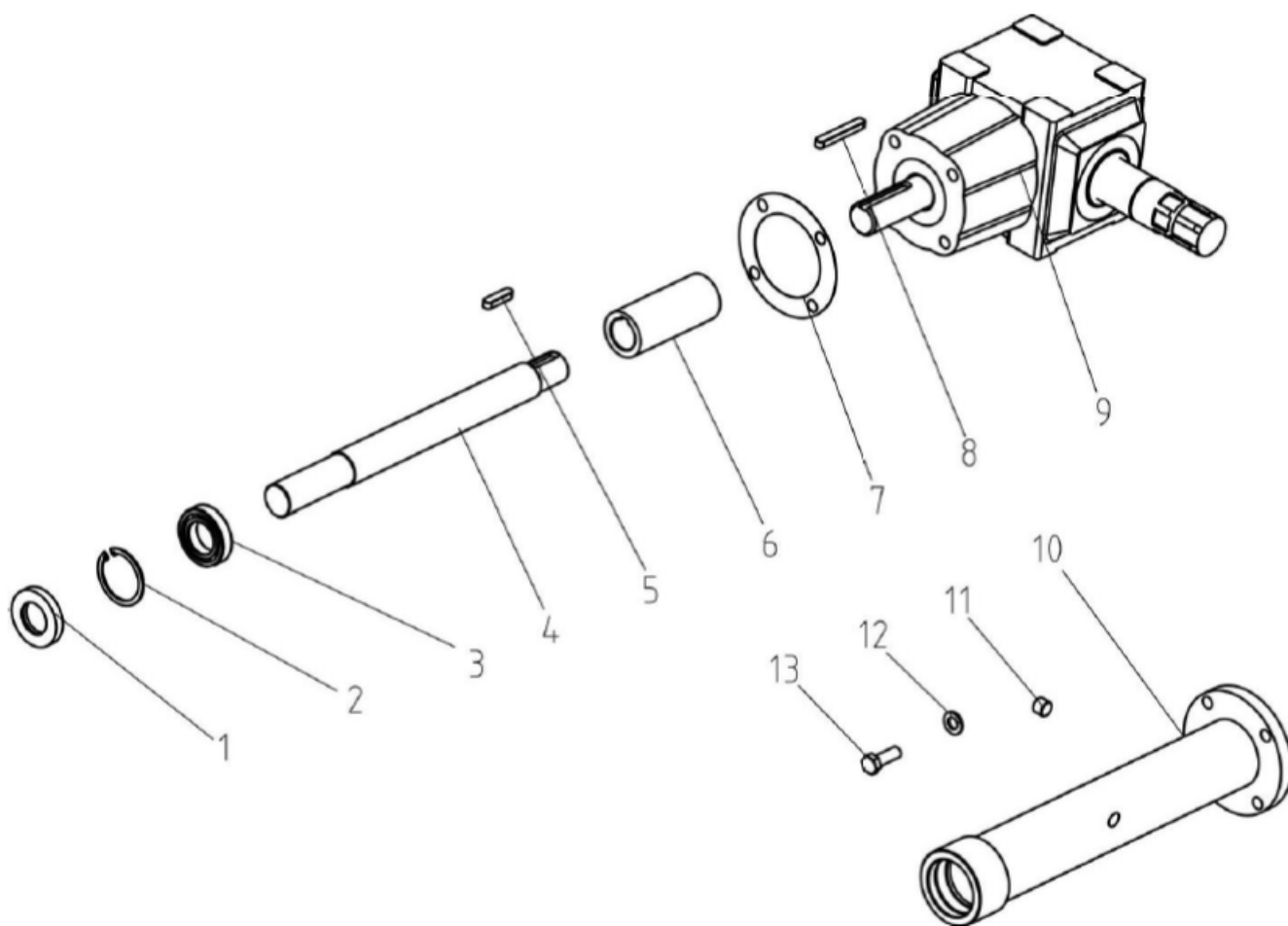
No.	Part No.						Name & Specifications	QTY
	EFGCH-105	EFGCH-125	EFGCH-135	EFGCH-145	EFGCH-155	EFGCH-175		
44	GB/T1154-97	GB/T1154-97	GB/T1154-97	GB/T1154-97	GB/T1154-97	GB/T1154-97	Strap A965	2
45	RK120.110	RK120.110	RK120.110	RK120.110	RK120.110	RK120.110	Small belt pulley	1
46	GB1152-89	GB1152-89	GB1152-89	GB1152-89	GB1152-89	GB1152-89	Oil cup M8x1	2
47	GB5783-86	GB5783-86	GB5783-86	GB5783-86	GB5783-86	GB5783-86	Bolt M12x30	16
48	GB93-87	GB93-87	GB93-87	GB93-87	GB93-87	GB93-87	Spring washer 12	12
49	EFGC120.013	EFGC120.013	EFGC120.013	EFGC120.013	EFGC120.013	EFGC120.013	Base plate (L)	1
	EFGC120.014	EFGC120.014	EFGC120.014	EFGC120.014	EFGC120.014	EFGC120.014	Base plate (R)	1
50							Blade axle subassembly	1
51	EFGCH120.102	EFGCH120.102A	EFGCH120.102A	EFGCH120.102A	EFGCH120.102A	EFGCH120.102A	Supporting tube	2
52	EFGCH120.104	EFGCH120.104A	EFGCH120.104A	EFGCH120.104A	EFGCH120.104A	EFGCH120.104A	Guide rail	2
53	EFG120.101	EFG120.101	EFG120.101	EFG120.101	EFG120.101	EFG120.101	Supporting for roller (R)	1
	EFG120.102	EFG120.102	EFG120.102	EFG120.102	EFG120.102	EFG120.102	Supporting for roller (L)	1
54	GB5783-86	GB5783-86	GB5783-86	GB5783-86	GB5783-86	GB5783-86	Bolt M12x35	12
55	EFGCH120.014	EFGCH120.014	EFGCH120.014	EFGCH120.014	EFGCH120.014	EFGCH120.014	Connecting bracket (R)	1
56	EFGCH120.015	EFGCH120.015	EFGCH120.015	EFGCH120.015	EFGCH120.015	GB5783-86	Slippage bracket (R)	1
57	GB6184-86	GB6184-86	GB6184-86	GB6184-86	GB6184-86	GB6184-86	Locking nut M18x1.5	2
58	GB97.1-85	GB97.1-85	GB97.1-85	GB97.1-85	GB97.1-85	GB97.1-85	Plain washer 18	6
59	EFGCH120.013	EFGCH120.013	EFGCH120.013	EFGCH120.013	EFGCH120.013	EFGCH120.013	Cylinder seat	1
60	GB6173-86	GB6173-86	GB6173-86	GB6173-86	GB6173-86	GB6173-86	Nut M18x1.5	1
61	EFGCH120.012	EFGCH120.012A	EFGCH120.012A	EFGCH120.012A	EFGCH120.012A	EFGCH120.012A	Slippage cylinder	1
62							Quick connector R1/2"	2
63	EFGCH120.011	EFGCH120.011	EFGCH120.011	EFGCH120.011	EFGCH120.011	EFGCH120.011	Oil pipe	2
64	GB3451-86	GB3451-86	GB3451-86	GB3451-86	GB3451-86	GB3451-86	Washer 12	4
65	GB3451-83	GB3451-83	GB3451-83	GB3451-83	GB3451-83	GB3451-83	Bolt M12x1.25	2
66	EFGCH120.101	EFGCH120.101	EFGCH120.101	EFGCH120.101	EFGCH120.101	EFGCH120.101	Sleeve	1
67	EF100.00.106	EF100.00.106	EF100.00.106	EF100.00.106	EF100.00.106	EF100.00.106	Circlip 60	4
68	EFGCH120.103	EFGCH120.103	EFGCH120.103	EFGCH120.103	EFGCH120.103	EFGCH120.103	Nylon bush	4
69	GB6184-86	GB6184-86	GB6184-86	GB6184-86	GB6184-86	GB6184-86	Locking nut M20x1.5	2
70	GB97.1-85	GB97.1-85	GB97.1-85	GB97.1-85	GB97.1-85	GB97.1-85	Plain washer 20	2
71	EFGCH120.017	EFGCH120.017	EFGCH120.017	EFGCH120.017	EFGCH120.017	EFGCH120.017	Slippage bracket (L)	1
72	GB5783-86	GB5783-86	GB5783-86	GB5783-86	GB5783-86	GB5783-86	Bolt M18x40	4
73	GB5783-86	GB5783-86	GB5783-86	GB5783-86	GB5783-86	GB5783-86	Bolt M12x40	14

8.2 Blade Axle Subassembly



No.	Part No.						Name & Specifications	QTY
	EFGCH-105	EFGCH-125	EFGCH-135	EFGCH-145	EFGCH-155	EFGCH-175		
1	UC207-Z	UC207-Z	UC207-Z	UC207-Z	UC207-Z	UC207-Z	Bearing with flange 90207	2
2	EFGC100.013	EFGC120.013	EFGC130.013	EFGC140.013	EFGC150.013	EFGC170.013	Blade axle weldment	1
3	GB5782-86	GB5782-86	GB5782-86	GB5782-86	GB5782-86	GB5782-86	Bolt M12x80	20
4	EF100.00.101	EF100.00.101	EF100.00.101	EF100.00.101	EF100.00.101	EF100.00.101	Sleeve	40
5	EF100.00.102	EF100.00.102	EF100.00.102	EF100.00.102	EF100.00.102	EF100.00.102	Blade	40
6	GB6184-86	GB6184-86	GB6184-86	GB6184-86	GB6184-86	GB6184-86	Locking nut M12	20
7	GB13871-94	GB13871-94	GB13871-94	GB13871-94	GB13871-94	GB13871-94	Oil seal FB55x80x8	1
8	RK120.109	RK120.109	RK120.109	RK120.109	RK120.109	RK120.109	Oil-sealing sleeve	1

8.3 Gearbox Assembly



No.	Part No.						Name & Specifications	QTY
	EFGCH-105	EFGCH-125	EFGCH-135	EFGCH-145	EFGCH-155	EFGCH-175		
1	GB13871-94	GB13871-94	GB13871-94	GB13871-94	GB13871-94	GB13871-94	Oil seal 35×62×10	1
2	GB893.1-86	GB893.1-86	GB893.1-86	GB893.1-86	GB893.1-86	GB893.1-86	Circlip 62	1
3	GB/T276-94	GB/T276-94	GB/T276-94	GB/T276-94	GB/T276-94	GB/T276-94	Bearing 6007	1
4	EFGC100.133	EFGC120.133	EFGC130.133	EFGC140.133	EFGC150.133	EFGC170.133	Shaft	1
5	GB1096-79	GB1096-79	GB1096-79	GB1096-79	GB1096-79	GB1096-79	Key A10x40	1
6	EFGC120.132	EFGC120.132	EFGC120.132	EFGC120.132	EFGC120.132	EFGC120.132	Connected sleeve	1
7	EFGC120.131	EFGC120.131	EFGC120.131	EFGC120.131	EFGC120.131	EFGC120.131	Paper gasket	1
8	GB1096-79	GB1096-79	GB1096-79	GB1096-79	GB1096-79	GB1096-79	Key A10x70	1
9	XH50.300Z.02	XH50.300Z.02	XH50.300Z.02	XH50.300Z.02	XH50.300Z.02	XH50.300Z.02	Gearbox assembly	1
10	EFGC100.018	EFGC120.018	EFGC130.018	EFGC140.018	EFGC150.018	EFGC170.018	Shaft tube weldment	1
11	ZBT 32001.3-87	ZBT 32001.3-87	ZBT 32001.3-87	ZBT 32001.3-87	ZBT 32001.3-87	ZBT 32001.3-87	Retainer	2
12	GB93-87	GB93-87	GB93-87	GB93-87	GB93-87	GB93-87	Plain washer 12	4
13	GB5783-86	GB5783-86	GB5783-86	GB5783-86	GB5783-86	GB5783-86	Hex. head bolt M12x35	4

9. CE DECLARATION OF CONFORMITY



Boxer Agriculture Equipment B.V.

A member of de Heus group

Stougjesdijk 153 – 3271KB Mijnsheerenland – Holland

Tel: +31 186 612 333

e-mail : info@boxeragri.nl



EG Conformiteitsverklaring

Volgens machinerichtlijn 2006/42/CE



Konformitätserklärung

Entsprechend der Richtlinie 2006/42/CE



EEC Declaration of Conformity

Conforming to the Directive 2006/42/CE



Déclaration CE de Conformité

Conforme à la directive de la 2006/42/CE

Wij – Wir – We – Nous :

Boxer Agriculture Equipment B.V.

Stougjesdijk 153

3271KB Mijnsheerenland – Holland

Verklaren onder eigen verantwoording dat de machine:

Erklären in alleiniger Verantwortung, daß die machine:

Declare under our own responsibility that the product:

Déclarons sous notre seule responsabilité que le produit:

Machine : Klepelmaaier/ Mulcher / Flail mower/ Broyeur

Type/model : EF95 / EF115 / EF135 / EF175

Seriennummer / Chassis number :

Bouwjaar / Baujahr / Year / Année :

De machine in de verklaring voldoet aan de fundamentele veiligheids- en gezondheidseisen die zijn vastgelegd in de richtlijn van 2006/42 / EG en ter verificatie zijn geraadpleegd UNI: EN 13524: 2004, EN 754. UNI: EN 1553: 2001

Auf dass sich diese Erklärung bezieht, den einschlägigen grundlegenden Sicherheit und Gesundheitsanforderungen EG-Richtlinie 2006/42/CE, UNI:EN 13524:2004, EN 754, UNI:EN 1553:2001 berücksichtigt

To which this certificate applies, conforms to the basic safety and health requirements of EEC Directives 2006/42/CE and following , we have consulted UNI:EN 13524:2004, EN 754. UNI:EN 1553:2001

Faisant l'objet de la déclaration est conforme aux prescriptions fondamentales en matière de sécurité et de santé stipulées dans la Directive de la 2006/42/CE et consultées pour vérification UNI:EN 13524:2004, EN 754. UNI:EN 1553:2001

Mijnsheerenland , 19/08/2019

De gevolmachtigde:

Der Bevollmächtigte:

The legal representative :

Le représentant légal:

