



LOG SPLITTER

LSP 22T • LSP 22T-110

USER MANUAL



P. de Heus en Zonen Greup B.V.
Stougjesdijk 153
3271 KB Mijnsheerenland
The Netherlands
Tel: +31 (0) 18 66 12 333
E-mail: info@boxeragri.nl



ENG | ENGLISH

TRANSLATION OF THE ORIGINAL MANUAL

CONTENTS

1.	PRODUCT SPECIFICATIONS	4
2.	SAFETY INSTRUCTIONS	5
2.1	Safety First.....	5
2.2	General Safety.....	6
2.3	Operating Safety.....	6
2.4	Storage Safety	7
2.5	Maintenance Safety	7
2.6	Safety & Model Decals	8
3.	OPERATION	9
3.1	Checking Before Operating	9
3.2	Assembly And Mounting	9
3.3	Field Operation.....	9
3.4	Transporting	10
4.	SERVICE AND MAINTENANCE	11
4.1	Service	11
4.2	Maintenance	11
5.	STORAGE	12
6.	PARTS LIST	13

1. PRODUCT SPECIFICATIONS

Product Model: LSP22T

- Hydraulic powered
- 3PL Cat 1
- 22 tonne hydraulic pressure

Tractor HP	15-55
3-Point Linkage	Cat-1
Length	490 mm
Width	1300 mm
Height	1940 mm
Weight	210 kg
Operation	Hydraulic
RAM	22 tonne
Working Position	Vertical

Log Splitter: Hydraulic powered 22 tonne

Uses splitting straight or knotty grained firewood.

Features

- Three point linkage mounted, tractor remote hydraulic operation makes wood splitting easy and safe
- Vertical positioning
- Wide blade for multiple log splitting
- Easy for one person to operate
- Safe & strong

2. SAFETY INSTRUCTIONS



WARNING

Before operating the Log splitter, read the following safety instructions. Failure to comply with these warnings may result in serious injury or death.

Please read and understand the information completely before operating your log splitter, paying special attention to all the safety details. Keep this manual handy for a ready reference.

2.1 Safety First

YOU are responsible for the SAFE operation and maintenance of your Log splitter. YOU must ensure that you and anyone else who is going to operate, maintain or work around the Log splitter is familiar with the operating and maintenance procedures and related SAFETY information contained in this manual. This manual will take you step-by-step through your working day and alert you to all good safety practices that should be adhered to while operating the Log splitter.

Remember, YOU are the key to safety. Good safety practices not only protect you but also the people around you. Make these practices a working part of your safety program. Be certain that EVERYONE operating this equipment is familiar with the recommended operating and maintenance procedures and follows all the safety precautions. Most accidents can be prevented. Do not risk injury or death by ignoring good safety practices.

- Log splitter owners must give operating instructions to operators or employees before allowing them to operate the machine.
- The most important safety feature on this equipment is a SAFE operator. It is the operator's responsibility to read and understand ALL Safety and Operating instructions in the manual and to follow these. Most accidents can be avoided.
- A person who has not read and understood all operating and safety instructions is not qualified to operate the machine. An untrained operator jeopardise himself and bystanders to possible serious injury or death.
- Do not modify the equipment in any way. Unauthorized modification may weaken the function and/or safety and could affect the life of the equipment.
- Think SAFETY! Work SAFELY!



2.2 General Safety

1. Read the operator's Manual and all safety signs carefully before operating, maintaining, adjusting or removing the Log splitter.
2. Operate only at safe distance from bystanders. Clear the area of people, especially small children, before starting.
3. Never split wood in wet or slippery conditions
4. Never stand on, straddle, or climb over the log splitter at any time
5. Keep all shields in place. If shield removal becomes necessary for repairs, replace the shield prior to use.
6. Always retract the ram and uncouple the log splitter from the hydraulic remotes before moving, adjusting, servicing or to remove any debris.
7. Review safety related items annually with all personnel who will operate or maintain the Log splitter.
8. Do not operate machine if you feel unwell or physically unfit, in which case you should stop working.
9. This machine was designed with safety very much in mind. However, there is no real substitute for caution and attention in preventing accidents. Once an accident has happened, it is too late to think about what you should have done.
10. Never exceed the limits of a piece of machinery. If its ability to do a job, or to do so safely, is in question – DON'T TRY IT.
11. Do not repair a hydraulic leak while it is under pressure, oil at high pressure can penetrate the skin and cause severe injury.

2.3 Operating Safety

The Log splitter must be operated safely to prevent or minimize the risk of minor or moderate injury. Unsafe operation can create a number of hazards for you. Always take the following precautions when operating this log splitter:

1. Keep in mind that the operator or user is responsible for accidents or hazards occurring to other people, their property, and themselves.
2. Wear long pants while splitting wood.
3. Always cut the ends of the log you are splitting as squarely as possible.
4. Never split more than one log at a time unless the ram has been fully extended and a second log is needed to complete the split of the first log.
5. Never put anything between the log guiding plates and the side of a log; logs spread as they are forced against the wedge.
6. Never operate the ram in a stalled position for more than 5 seconds. the hydraulic fluid may overheat and damage the machine. if the wood being split is excessively hard, stop the machine, rotate the log 90° and try again. if you still cannot split the log, reject the log as it exceeds the capacity of the machine.
7. Never leave the wood splitter unattended. if you leave the area, unplug the power source.
8. Clean up as you work; accumulated split wood and wood chips can create a hazardous work environment.
9. Always check the alignment of moving parts and for damaged or worn parts.
10. Keep all nuts and bolts tight and keep the equipment and attachments in good operating condition.
11. Review safety instructions with all operators annually.

2.4 Storage Safety

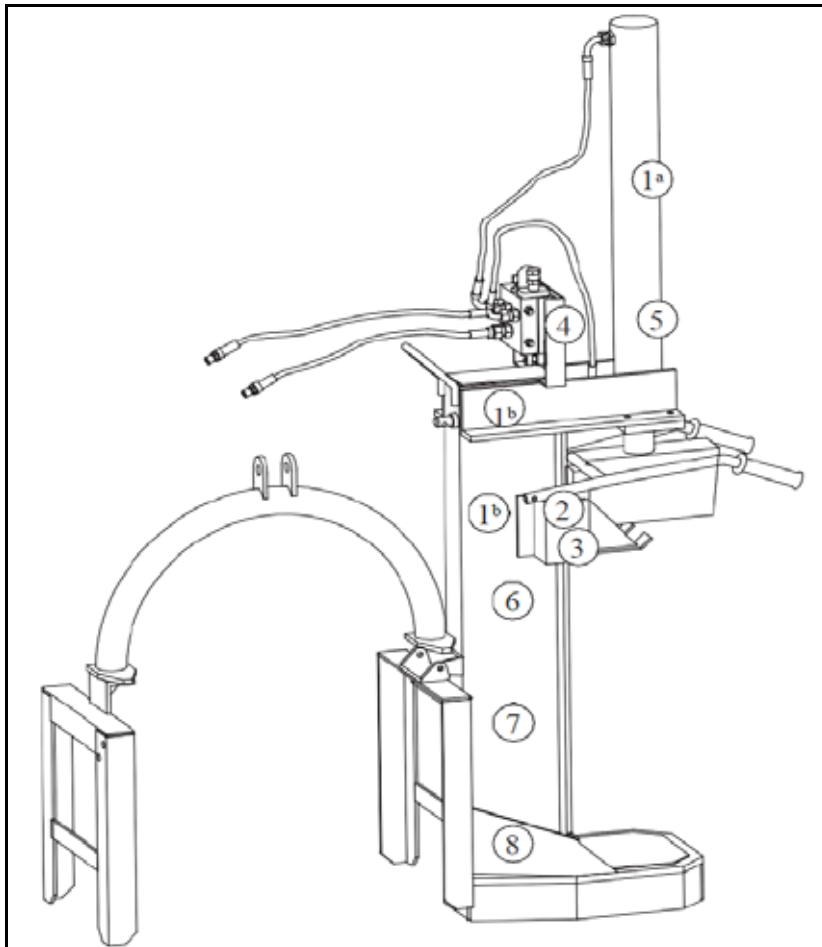
1. Store the machine in an area away from human activity.
2. Do not permit children to play on or around the stored machine.
3. Store the machine in a dry, level area.
4. Clean grease and oil as required and protect it from the elements.

2.5 Maintenance Safety

1. Good maintenance is your responsibility. Poor maintenance is an invitation to trouble.
2. Follow good shop practices.
3. Keep service area clean and dry.
4. Be sure electrical outlets and tools are properly grounded.
5. Use adequate light for the job at hand.
6. Make sure there is plenty of ventilation. Never operate the engine in a closed building. The exhaust fumes may cause asphyxiation.
7. Before working on this machine, shut off the engine, set the brakes, and remove the ignition key.
8. Never work under equipment unless it is secured by a mechanical stand.
9. Use personal protection devices such as eye, hand and hearing protectors, when performing any service or maintenance work.
10. Always release residual energy from pressurised hydraulic fluid and allow the fluid to cool before doing any maintenance or repair work on the log splitter.
11. Never use your hand or any part of your body to check for hydraulic system leaks while the system is pressurised.
12. Never remove the fill/dipstick cap from the hydraulic fluid port while the hydraulic circuit is live or while the tank is still warm after operation. Hot pressurised fluid can cause serious injury, so wait for the hydraulic tank to cool before removing cap.
13. The log splitter must be on a level surface.
14. Get professional medical help at once if hydraulic oil penetrates anyone's skin.
15. Never adjust the hydraulic system.
16. Only use genuine parts for service and maintenance.
17. A fire extinguisher and first aid kit should be kept readily accessible while performing maintenance on this equipment.
18. Periodically tighten all bolts, nuts and screws and check that all pins are properly installed to ensure unit is in a safe condition.
19. When completing a maintenance or service function, make sure all safety shields and devices are installed before placing machine in service.

2.6 Safety & Model Decals

The Safety signs should be maintained in good order on the machines.



1^a LSP22T



2 Model
Serial No

3 ST:



3. OPERATION

3.1 Checking Before Operating

- The Log splitter will fit most Category 1 tractors equipped with a standard 3-point hitch. The pins need to be installed to the inside of the 3-point frame for use with Category 1 tractors. This Implement is designed for use on tractors equipped with remote hydraulics.
- Check the tractor's 3-point hydraulic lift system. It should operate up and down smoothly and hold its position when set.
- Refer to your tractor owner's manual or dealer for any adjustments necessary to put the 3-point hydraulic lift system in good working order.
- Tractor should be equipped with stabiliser bars, adjustable sway chains or sway blocks to keep the implement from swinging side to side. Smaller size tractors may need front counterweights to counterbalance the weight of the implement.

3.2 Assembly And Mounting

1. Lower the hydraulic linkage arms using the position control.
Note: It may be necessary to add weight to the three points hitch to lower the lift arms.
2. Back the tractor at low speed towards the Implement and adjust the lower links to the proper level.
3. Stop tractor, set park brake, remove ignition key and wait for all moving parts to stop before dismounting.
4. Connect the tractor's lower links with implement's left and right lower suspension bracket and put pins in. Connect the chain top-link with implement's top-link bracket and put pin in.
5. Connect hydraulic couplers to tractor remotes, use the 3 points hitch to raise the machine from the ground before moving the machine.
6. Reverse the above procedure when removing the machine from the tractor.

3.3 Field Operation

1. Position the Log Splitter on solid level ground when operating.
2. Apply the tractor brake securely and put transmission into Park / Neutral.
3. Using right hand to select direction of movement.
4. Operate ram to lift wedge above height of log to be split.
5. Position centre of log under wedge. Move wedge until contact is made with the log.
6. Keep two hands on control levers while splitting log. The speed can be controlled by how much pressure you put on the control valve.
7. Stop splitting if log starts to go sideways and reposition per above instructions.
8. Should the wedge lodge or become stuck in the log, return wedge to fully open position and gently rock log free before continuing.

3.4 Transporting

When transporting the machine, review and follow these instructions:

1. Be sure that the machine is securely attached to the tractor and all retainer pins are installed.
2. Be sure you have installed extra weights on the front of the tractor.
3. Be sure you are in compliance with all applicable lighting and marking regulations when transporting.
4. Be sure your machine can be seen clearly by overtaking and oncoming traffic.
5. Do not allow riders.
6. Always use hazard flashers on the tractor when transporting.

4. SERVICE AND MAINTENANCE

4.1 Service

FLUIDS AND LUBRICANTS

- Grease: Use multi-purpose lithium based grease.
- Hydraulic Oil: Use HD46 hydraulic oil.
- Storing Lubricants: Your machine can operate at top efficiency only if clean lubricants are used. Use clean containers to handle all lubricants. Store them in an area protected from dust, moisture and other contaminants.

GREASING

1. Use a hand-held grease gun for all greasing.
2. Wipe frame slide clean before greasing.

4.2 Maintenance

The recommended period is based on normal operating conditions. Severe or unusual conditions may require more frequent maintenance.

8 HOURS OR DAILY MAINTENANCE

1. Check and tighten all nuts and bolts in connection parts.
2. Pump grease onto the frame side as required.
3. Clean the implement; take away all dirt, debris and residue.

SEASON MAINTENANCE

1. Check the machine as above for daily maintenance.
2. Check the hydraulic oil; replace it if it is contaminated.
3. Check the limiting block for wear and tear. If worn, disassemble, clean and replace them if necessary.
4. Check the hydraulic hoses and coupling. Replace if required.

ANNUAL MAINTENANCE

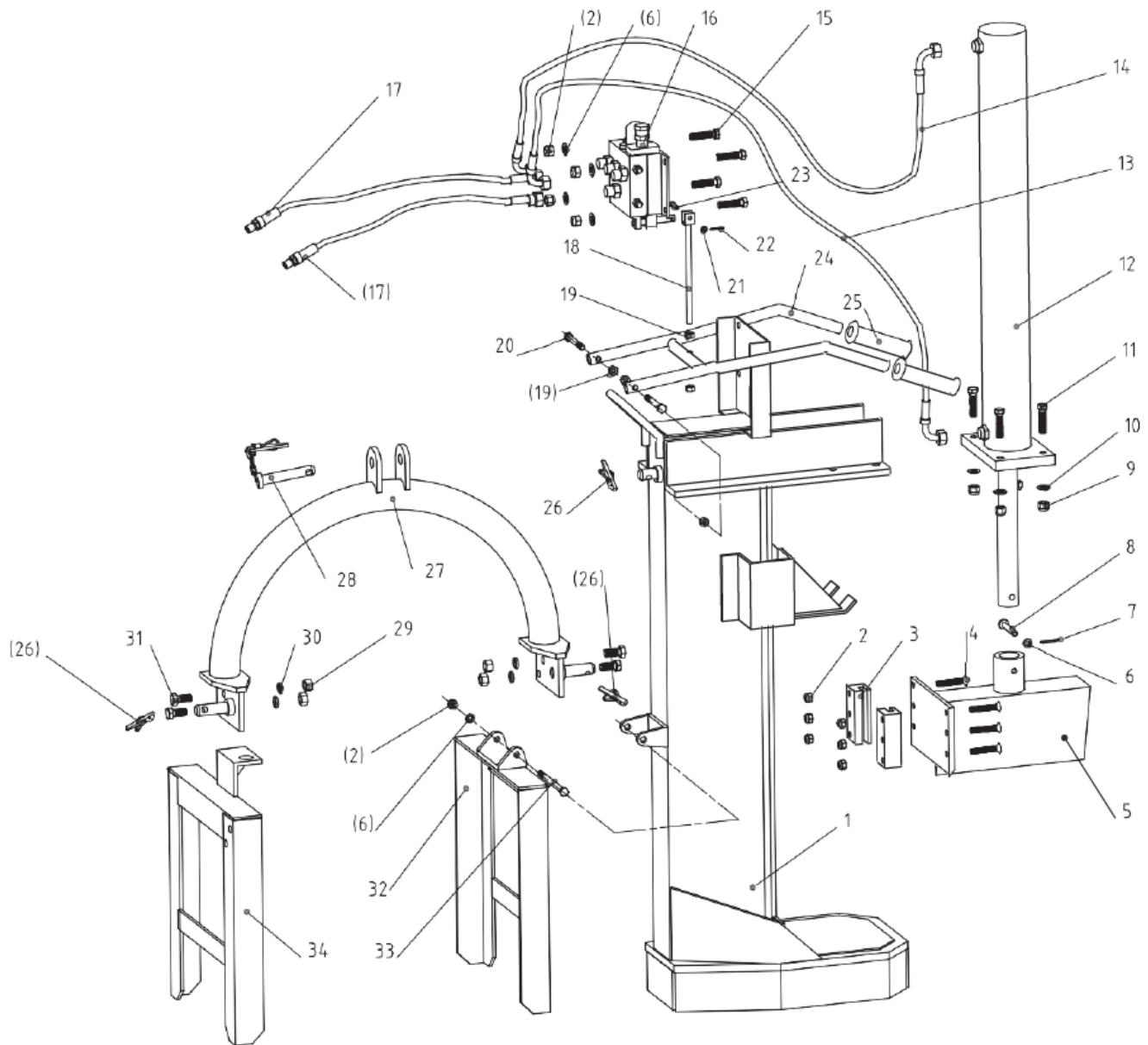
1. Thoroughly clean the log splitter from debris and residue.
2. Check splitting wedge, sharpening if required. (Just use a file on it as it does not have to have a razor sharp edge)
3. Apply a thin coating of oil or Grease to the Wedge Cutting Edge to prevent rust.

5. STORAGE

After the season's use, the machine should be thoroughly inspected and prepared for storage. Repair or replace any worn or damaged components to prevent any unnecessary down time at the start of next season. To insure a long, trouble free life, follow the procedure outlined below:

1. Thoroughly wash the machine using a pressure washer to remove all dirt, mud, debris and residue.
2. Inspect the splitting wedge and ram for damage or entangled material. Repair or replace damaged parts. Remove all entangled material.
3. Coat all exposed cylinder shafts with corrosion preventative.
4. Touch up all paint nicks and scratches to prevent rusting.
5. Move to storage area.
6. Select an area that is dry, level and free of debris.
7. Unhook from tractor.
8. If the machine cannot be placed inside, cover with a waterproof tarpaulin and tie securely in place.
9. Store the machine in an area away from human activity. Do not allow children to play on or around the stored machine.

6. PARTS LIST



No.	Part No.	Name and Specifications	Qty
1	LSP22T-011	Frame	1
2	GB 6184-86	Locking nut M10	11
3	LSP22T-101	Limiting block	2
4	GB 819-85	Screw M10X55	6
5	LSP22T-012	Wedge	1
6	GB 97.1-85	Plain washer 10	6
7	GB 91-86	Split pin 3.2X20	1
8	LSP22T-102	Pin shaft	1
9	GB 6184-86	Locking nut M12	4
10	GB 97.1-85	Plain washer 12	4
11	GB 5783-86	Bolt M12X50	4

No.	Part No.	Name and Specifications	Qty
12	LSP22T-015	Oil cylinder	1
13	LSP22T-020	Oil return pipe	1
14	LSP22T-021	Oil enter pipe	1
15	GB 5783-86	Bolt M10X20	4
16	LSP22T-016	Valve	1
17	LSP22T-022	Oil tube	2
18	LSP22T-014	Pull rod	1
19	GB 6170-86	Nut M10	4
20	GB 5780-86	Bolt M10X80	2
21	GB 97.1-85	Plain washer 6	1
22	GB 91-86	Split pin 2X14	1
23	GB 882-86	Pin 6X30	1
24	LSP22T-013	Control cylinder rod	1
25	LSP22T-103	Handle sheath	1
26	200.56.011	Lock pin	3
27	LSP22T-019	Traction bracket	1
28	EF100.00.019	Pin shaft	1
29	GB 6170-86	Nut M14	4
30	GB 93-87	Spring washer 14	4
31	GB 5783-86	Bolt M14X30	4
32	LSP22T-018	Left bracket	1
33	GB 5780-86	Bolt M10X140	1
34	LSP22T-017	Right bracket	1