



# FRONT AND REAR MULCHER DUO

## USER MANUAL



**P. de Heus en Zonen Greup B.V.**  
Stougjesdijk 153  
3271 KB Mijnsheerenland  
The Netherlands  
Tel: +31 (0) 18 66 12 333  
E-mail: [info@boxeragri.nl](mailto:info@boxeragri.nl)



**ENG | ENGLISH**

**TRANSLATION OF THE ORIGINAL MANUAL**

<b>1.</b>	<b>GENERAL INFORMATION .....</b>	<b>4</b>
1.1	Introduction .....	4
1.2	Symbols .....	4
<b>2.</b>	<b>SAFETY LABELS .....</b>	<b>5</b>
<b>3.</b>	<b>SAFETY .....</b>	<b>7</b>
3.1	Allowed use .....	7
3.2	Improper use .....	7
3.3	Safety in the workplace .....	7
3.4	General safety rules .....	8
<b>4.</b>	<b>OPERATION .....</b>	<b>10</b>
4.1	Attachment to the tractor .....	10
4.2	Driveline attachment.....	11
4.3	Working height adjustment .....	12
4.4	Drive belt adjustment.....	13
<b>5.</b>	<b>TRANSPORT .....</b>	<b>14</b>
5.1	Working speed .....	14
5.2	Road transport .....	14
<b>6.</b>	<b>STORAGE .....</b>	<b>15</b>
6.1	Pre-season check.....	15
<b>7.</b>	<b>MAINTENANCE .....</b>	<b>16</b>
<b>8.</b>	<b>PARTS LISTS .....</b>	<b>18</b>
<b>9.</b>	<b>CE DECLARATION OF CONFORMITY .....</b>	<b>26</b>

---

# 1. GENERAL INFORMATION

## 1.1 Introduction

The DUO Flails are primarily designed to mow grass, weeds and light brush.

The mowers are assembled for operation with 1000 RPM tractor input only (rated PTO up to 45 HP), and supplied standard with Cat. I lift pins for tractor attachment.

The mowers can fit Cat. I quick attach hitch, by using suitable bushings to adapt diameters of lift pins.

## 1.2 Symbols

This booklet contains three "safety graphic symbols" which highlight the relevant danger levels or important information:



### **WARNING**

It draws the operator's attention to situations which can jeopardize people's safety.

---



### **CAUTION**

It draws the attention to situations which jeopardize the machine efficiency but not people's safety.

---



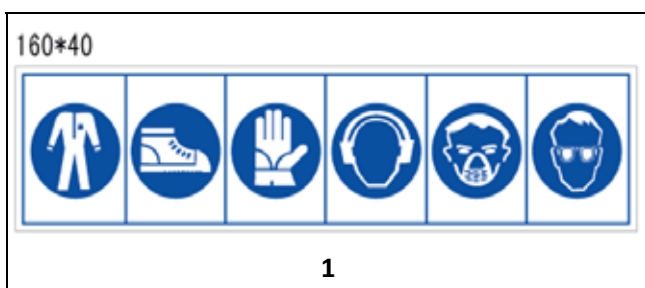
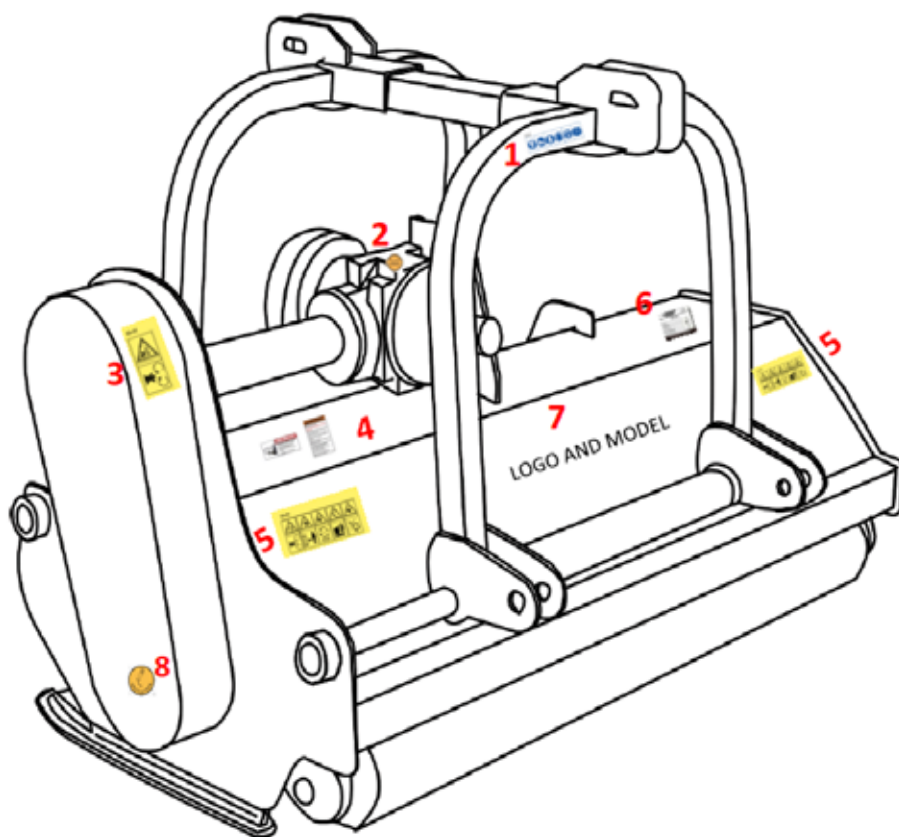
### **IMPORTANT**

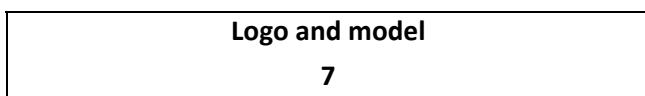
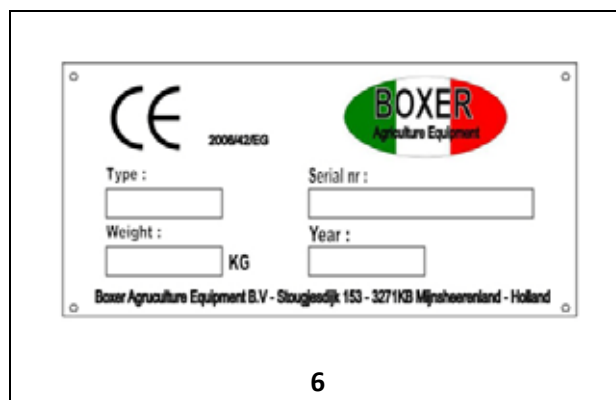
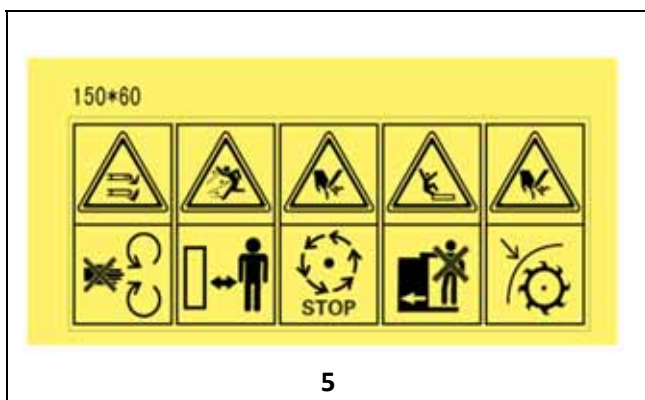
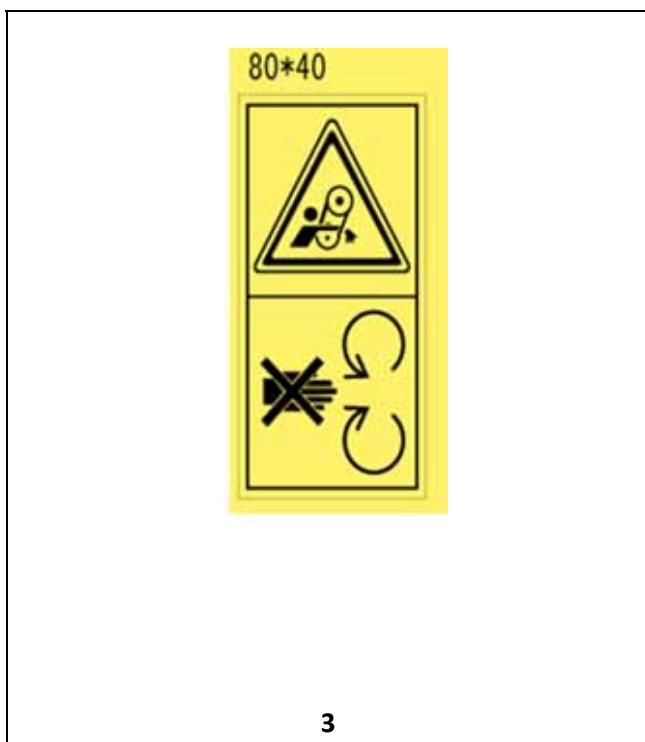
It highlights general information which does not endanger people's safety or the efficiency of the parts.

---

## 2. SAFETY LABELS

The safety labels and the information on the machine, listed in the following table, must be necessarily read and respected; failure to follow these warnings can cause death or severe injuries. Make sure that the labels are always present and legible, should this not be the case, contact your nearest dealer to replace the missing or illegible ones.





---

## 3. SAFETY

### 3.1 Allowed use

DUO flail mowers, as described in this instruction and maintenance booklet, have been specifically designed to mow grass, weeds, and light brush up to 1" diameter. Any other use jeopardizes the operator's safety and the machine integrity.

### 3.2 Improper use

The mower was designed to mow grass, weeds, and light brush only. Only operate this mower on a properly sized and equipped tractor.

When using DUO flail mowers, it is particularly **forbidden**:

- The attachment to tractors of unsuitable power or weight.
- To use other than 1000 R.P.M. PTO speed.
- To work in excessively stony grounds.
- To work on excessive slopes.
- To approach the machine when wearing inappropriate work clothing.
- To get on the machine while it is being used or transported.



#### WARNING

Operating this mower in an application for which it is not designed and/or operating with the wrong size tractor can cause mower component damage and equipment failure resulting in possible serious injury or death.

---

### 3.3 Safety in the workplace

Most of the accidents which take place while the operator is using the machine or the equipment or during their maintenance or repair are caused by a lack of compliance with the basic safety precautions. It is necessary, therefore, to become more and more conscious of the potential risks of one's action by constantly paying attention to its effects.

If potentially dangerous situations are known, accidents can be prevented!

#### OPERATOR'S REQUIREMENTS

- |           |   |
|-----------|---|
| Physical: | Good eyesight, coordination and capability of carrying out all functions required for the machine's use.  |
| Mental:   | Capability of understanding and applying the established rules and safety precautions. Users must pay attention and be sensible for their own and other people's safety.                                |
| Training: | Users must have read and studied this manual, its eventual enclosed graphs and schemes and its identification and danger plates. They must be skilled and trained on any use or maintenance activities. |

---

## WORK CLOTHING

When working and especially when executing repair or maintenance activities, it is necessary to wear the following clothing and safety accessories:

- Overalls or other comfortable clothing, not too loose to prevent the possibility that parts of them might be caught in the moving parts.
- Protective gloves for hands.
- Protective glasses or faceplate to protect eyes and face.
- Protective helmet for the head.
- Safety shoes

Wear only personal safety accessories in good condition and complying with the rules in force.

## 3.4 General safety rules

### ALWAYS CONSIDER THE FEATURES OF THE AREA WHERE WORK IS TAKING PLACE:

When the equipment is running, it is forbidden to stand within the field of action of the shredder or of the other accessories of which it is provided with.

### PREPARE THE WORK:

- Before and when working, do not drink alcohol, take drugs, or any other substances which may alter your capability of working with machine tools.



### IMPORTANT

Be sure to have sufficient fuel, to prevent a forced stopping of the machine, maybe during a critical movement.

---

- Do not use the equipment under unsafe conditions. For instance, it is forbidden to execute makeshift repair activities just to start working; it is forbidden to work at night with an insufficiently illuminated working area.
- NEVER operate implement without all shields in place and in good operational condition. The operator must be familiar with the mower and tractor and all associated safety practices before operating the mower and tractor.

### WHEN WORKING OR DURING THE MAINTENANCE ACTIVITIES IT IS NECESSARY TO REMEMBER:

- The labels and stickers providing instructions and pointing out the dangers, must not be removed, hidden, or made illegible.
- Do not remove, except in case of maintenance, the shields, guards, and deflectors equipped on the mower. When it is necessary to remove them, stop engine, handle with care and reassemble them properly before restarting the engine and using the equipment. The mower is equipped with protective deflectors to prevent objects being thrown from the mower by the blades, however, no shielding is 100% effective. All shields, guards, and deflectors equipped on the mower must be maintained in good operational condition.
- It is forbidden to lubricate, clean and adjust the moving parts while they are running.
- During maintenance or adjustment activities on the equipment it is forbidden to use hands for executing operations for which there are specific tools.
- Do not use tools in bad condition or inappropriately, for instance pliers rather than monkey spanners, etc.



- 
- When maintenance or repairs are completed check out that no tools, wiping rags, or other materials are left inside spaces or guides with moving parts.
  - While using the equipment, it is forbidden to make more than one person give directions and make signals. The eventual directions and signals relating to the load handling must be given by one person only.
  - Do not unexpectedly call an operator while he is working if not necessary; it is forbidden as well to frighten or throw objects at the operator, even if just for fun.
  - Watch out for those who are present, especially the children!
  - Do not make people get on the machine.
  - When the equipment is not needed, stop the vehicle's engine, park it on flat ground with first speed and parking brake on, with the machine rested on the ground and PTO disengaged.
  - Do not clean, lubricate, repair or adjust with the engine running and the machine lifted.
  - Never use the machine on steep slopes which may jeopardize the equipment's stability.

The manufacturer declines all responsibility for a lack of compliance with these instructions.

Model	Working width	PTO speed (rpm)	Recommended power (hp)	Category	Weight (kg)	Cutting blade
DUO 250 plus	250	1000	85 -150	CAT. II/III	960	22
DUO 280 plus	280	1000	100 -150	CAT. II/III	1064	26
DUO 300 plus	300	1000	100 -150	CAT. II/III	1230	30

---

## 4. OPERATION

### 4.1 Attachment to the tractor

Before operating the mower, carefully read this Operator's Manual, completely understand the safety instructions, and know how to operate correctly both the tractor and the PTO shaft, reading carefully the instruction manuals of the tractor and PTO shaft manufacturers.

All DUO flail mowers have been manufactured to be attached to any tractor provided with hydraulic and universal 3-point hitch.

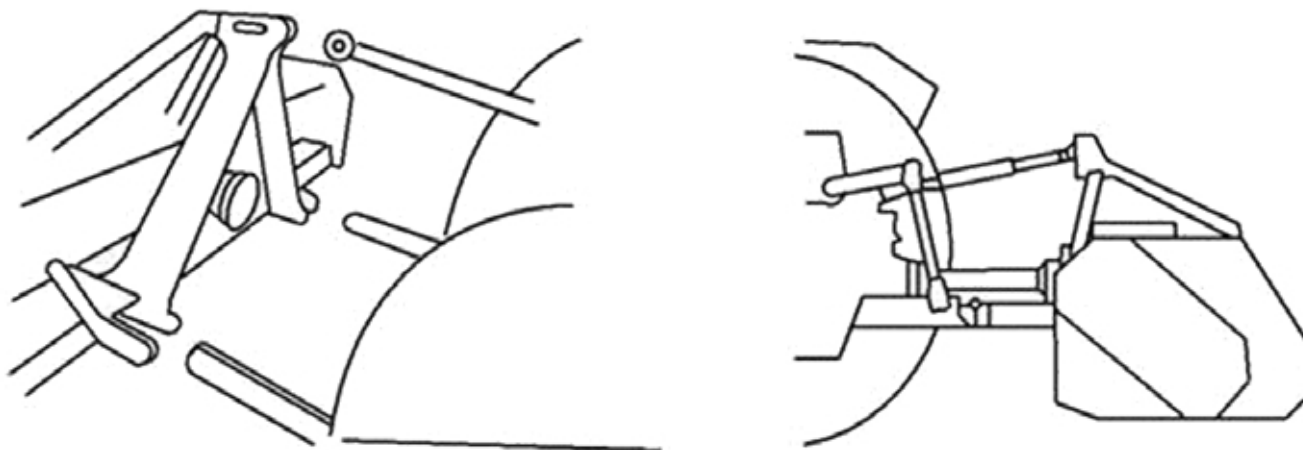
The tractor used to operate the mower must have the power, capacity, and required equipment to safely operate the mower. Operating the mower on improperly sized and equipped tractors may cause tractor and/ or mower damage and could be a potential danger to the operator and passers-by.

Before attaching the equipment to the tractor, set both on a flat and smooth ground and make sure that nobody is standing between them.

Move slowly the tractor towards the flail mower by aligning the tractor hydraulic lift arms to the two mower hitches' lateral brackets; stop engine and set parking brake.

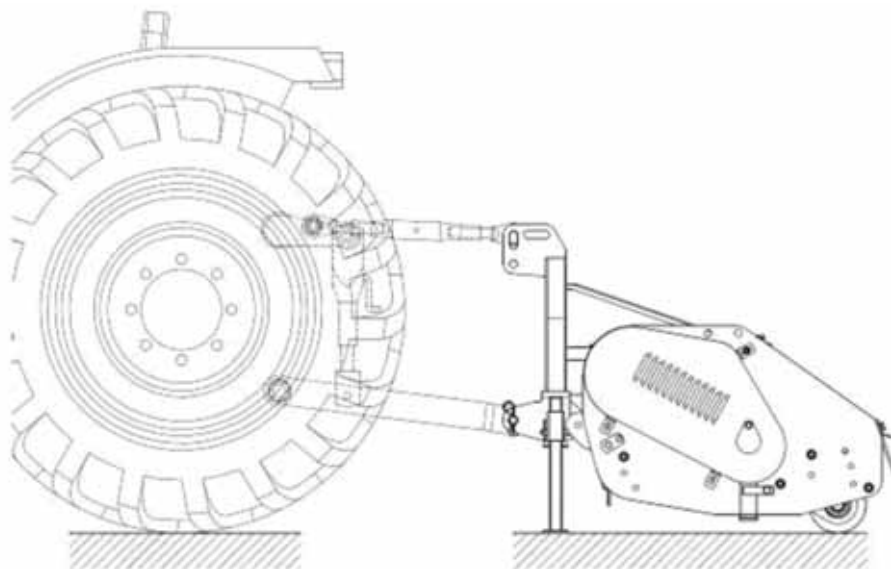
Connect first the lower arms by removing the release pins of the brackets placed on the plates, inserting the lift arms into the arms center and fastening them with the relevant release pins, which had been removed.

Connect, then, the tractor top link to the third upper point by removing the pin located between the plates, inserting the top link itself and locking it with the pin.



---

## SET UP



Adjust the third point so that the upper part of the frame is parallel to the ground. Lock all connection parts with the special sway chains or tie rods.

It is always good to make sure that the central gearbox axis is parallel to the ground thus reducing the stresses on the power takeoff and extending the working life of the equipment.



### CAUTION

Pay attention to the tractor's front wheels grip when the equipment is set up and lifted; if the wheels appear to be too lightened, ballast the tractor front tires or add front weights.

---



### IMPORTANT

After executing the above mentioned activities it is always good to check that all bolts and nuts of your shredder are tightened strongly (refer to the torque specifications in this manual).

---

## 4.2 Driveline attachment

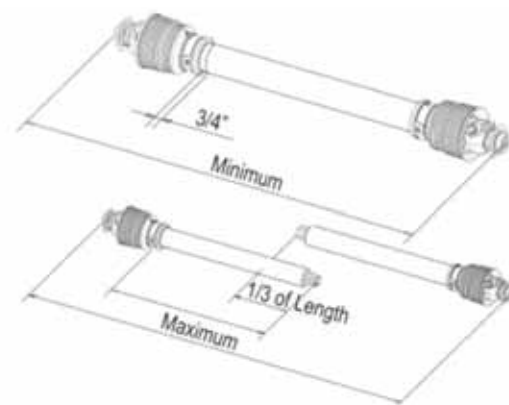
Before assembling the PTO shaft, check out that its RPM and direction of rotation match those of the tractor. Moreover, read carefully the instruction manuals of the PTO shaft and the tractor manufacturers. Before starting work, make sure all safety shields are in place. Check in particular that the safety guards cover the PTO shaft throughout its extension. When attaching the mower input driveline to the tractor PTO, be sure that the connecting yoke spring activated locking collar slides freely and the locking balls are seated securely in the groove on the tractor PTO shaft. A driveline not attached correctly to the tractor PTO shaft could come loose and result in personal injury and damage to the implement.



## CAUTION

Make sure the driveline will not bottom out (at its most compressed position there must be at least a 3/4" clearance between each profile end and opposite profile universal joint) or become disengaged (at its farthest extended position a minimum profile engagement of 1/3 of the length must be maintained).

Check out that the cardan shaft minimum and maximum length are the ones required by the machine-tractor coupling. Should problems arise, contact a skilled repair shop or the driveshaft retailer. After installation, secure safety guards both to the tractor and the machine using the special chains and make sure that they pivot freely. If the PTO shaft is equipped with other safety devices, such as a pair limiter or freewheels, be sure to install them on the machine side. As for the PTO use and maintenance refer to the relevant booklet.

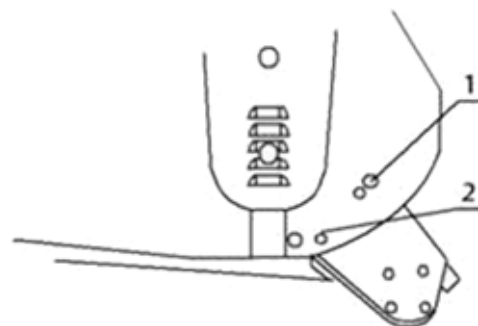


## 4.3 Working height adjustment

The machine's working height is determined by the position of the rear roller. Lifting the roller the cutters get close to the soil, whereas lowering it the cutters get far from it. After a modification of the working height be sure that the cutters skim the ground; a direct contact with it would cause their wear and this could affect the cutting rotor balance and may cause objects to be thrown out from under the mower deck.

### FLAIL MOWER ADJUSTMENT

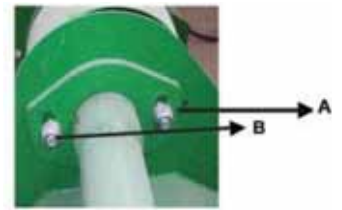
1. On a flat piece of ground, attach the Flail Mower to the tractor using the three point linkage.
2. Use a solid adjustable top link.
3. Lower the three point linkage to its lowest position
4. With the roller at the rear in contact with the ground, adjust the length of the top link so that the lower edge at the side of the flail mower is parallel with the ground.
5. Rotate the blade drum by hand so that a row of blades hang vertically towards the ground.
6. Measure the clearance between the bottom of the extended blades and the ground.
  - Minimum 50mm.
  - Note: In rough or lumpy paddocks the clearance needs to be increased to ensure that the blades don't impact the ground in operation.
7. Adjust the roller height to increase or decrease the blade clearance as required.
8. Go through steps 4 to 7 until the required clearance is achieved.



When the Flail Mower has been set up with the required tolerances, operate the Flail Mower with tractor in low range and the PTO delivering 1000 RPM.

## 4.4 Drive belt adjustment

1. Loosen the Screw A and B that locks the support shaft and loosen the counter nut C. Loosen the screws that lock the gear box on the mounting plate D.
2. Adjust the drive belt tension. The correct belt tension is achieved when the belt can be deflected by the belt thickness about 10mm at the center point between the pulleys.
3. Align the gearbox so the drive shaft is parallel with the body.
4. Use a straight edge to make sure the belt pulleys are in line and running true. If misaligned, call your dealer or service agent for technical support.
5. Fit the safety covers and tighten the mounting bolts before operation.



Approx 10mm deflection



Align with a straight edge

---

## 5. TRANSPORT

### 5.1 Working speed

The working speed depends on quality, diameter and height of the material to be cut; anyway, for efficient mower performance it must be between 2 and 5 MPH. The power takeoff speed must be 1000 RPM maximum. Operate the mower at its full rated PTO speed to maintain blade speed for a clean cut.



#### CAUTION

Do not exceed the rated PTO speed for the implement. Excessive PTO speeds can cause driveline or blade failures resulting in serious injury or death.

---

### 5.2 Road transport

Extreme caution should be used when transporting the tractor and implement on public roadways. The tractor must be equipped with all required safety warning features including a SMV emblem and flashing warning lights which are clearly visible from the rear of the unit. Make sure you are in compliance with all local regulations regarding transporting equipment on public roads and highways. Do not exceed 20 MPH (32 kph). Reduce speed on rough roads and surfaces. Always use hazard flashers on the tractor when transporting unless prohibited by law.

---

## 6. STORAGE

If your shredder will not be used for a long period of time, respect the following suggestions:

1. Wash the machine thoroughly and dry it.
2. Lubricate all bearings with enough grease to eliminate any cavities where water condensation may occur and cause damage. Refer to 7. "MAINTENANCE" for location of all grease fittings. Be sure the vent on top of the gearbox is open.
3. Loosen the set nut and spindle jack to relieve drive belt tension (NOTE: Before next season's use, be sure to adjust the drive belt tension.)
4. Coat all exposed surfaces inside the mower with oil or grease to prevent rusting and pitting during storage.
5. Protect the whole machine with a tarpaulin and put it in a dry place.

### 6.1 Pre-season check

1. Check the oil level in the gearbox and lubricate all bearings. See "Lubrication".
2. Adjust drive belt tension. See "Belt Drive".
3. Check out all equipment and replace damaged or worn parts.
4. Tighten all bolts and nuts (See "Torque Specifications").
5. Inspect for missing and/or broken blades/knives. Replace as necessary. See "Knife Replacement".
6. Be sure that the safety guards are in place and secure.
7. Run the Flail Mower at a low RPM checking to make sure that all driveline parts are moving freely.

---

## 7. MAINTENANCE

Maintenance is a fundamental operation to extend life and performances of any agricultural vehicle; taking care of the machine grants you not only a good work execution, but also a longer life of the whole equipment and a greater safety on the workplace.

The operating times indicated in this manual have just an informative character and are referred to normal conditions of use; they can thus undergo variations according to the type of service.



### CAUTION

- Before injecting lubricating grease into the zerks, clean them accurately to prevent mud, dust, or other foreign matters from mixing up with grease, thus diminishing the lubrication effect.
  - When adding or changing oil, it is better to use the same oil type, in order to avoid mixing oils with different features.
  - Before executing maintenance activities on the machine, stop engine, disengage power takeoff, set parking brake and place the equipment on the ground in horizontal position.
  - After the first working hours, check that all bolts and nuts are tightened; remember also to check often all the machine safety guards.
- 

### FIRST CHECK

- Check the correct tension of the driving belt
- Check that all bolts and nuts are tightened
- After the first 50 hours of work, change oil in the gearbox

### EVERY 8 HOURS OF WORK

- Rotate teardrop shaped plate B and grease the shaft support (driveline side) through the lubricating nipple A (picture 1).
- Grease the shaft support (external side) through the lubricating zerk A (picture 2).
- Grease the shaft support (driveline) and the belt tensioner idler pin through the lubricating zerks A and B (picture 3).
- Grease the stabilizing roller through the lubricating zerk A (picture 4)

### EVERY 50 HOURS OF WORK

- Check the correct tension of the driving belt
- Check that all bolts and nuts are tightened
- Check the cutters/hammers for wear
- Check the overgear unit oil level through plug A (picture 5)

### EVERY 500 HOURS OF WORK

- Check that all bolts and nuts are tightened
- Change oil in the overgear unit



---

## EVERY 1000 HOURS OF WORK

Replace the driving belt.

## GEAR BOX MAINTENANCE

The oil should be drained out and replaced after the first 50 hours of operation. Then the oil should be changed every 250 hours, or at least once a year.

Drain oil from the gearbox thoroughly. Check and clean it. Fill with new gear oil up to the dedicated oil level.

The draining procedure is as follows: remove the draining bolt under the gear box, so that the oil drains off. After the oil is drained out, put the plug back and fill with gear oil up to the dedicated oil level.

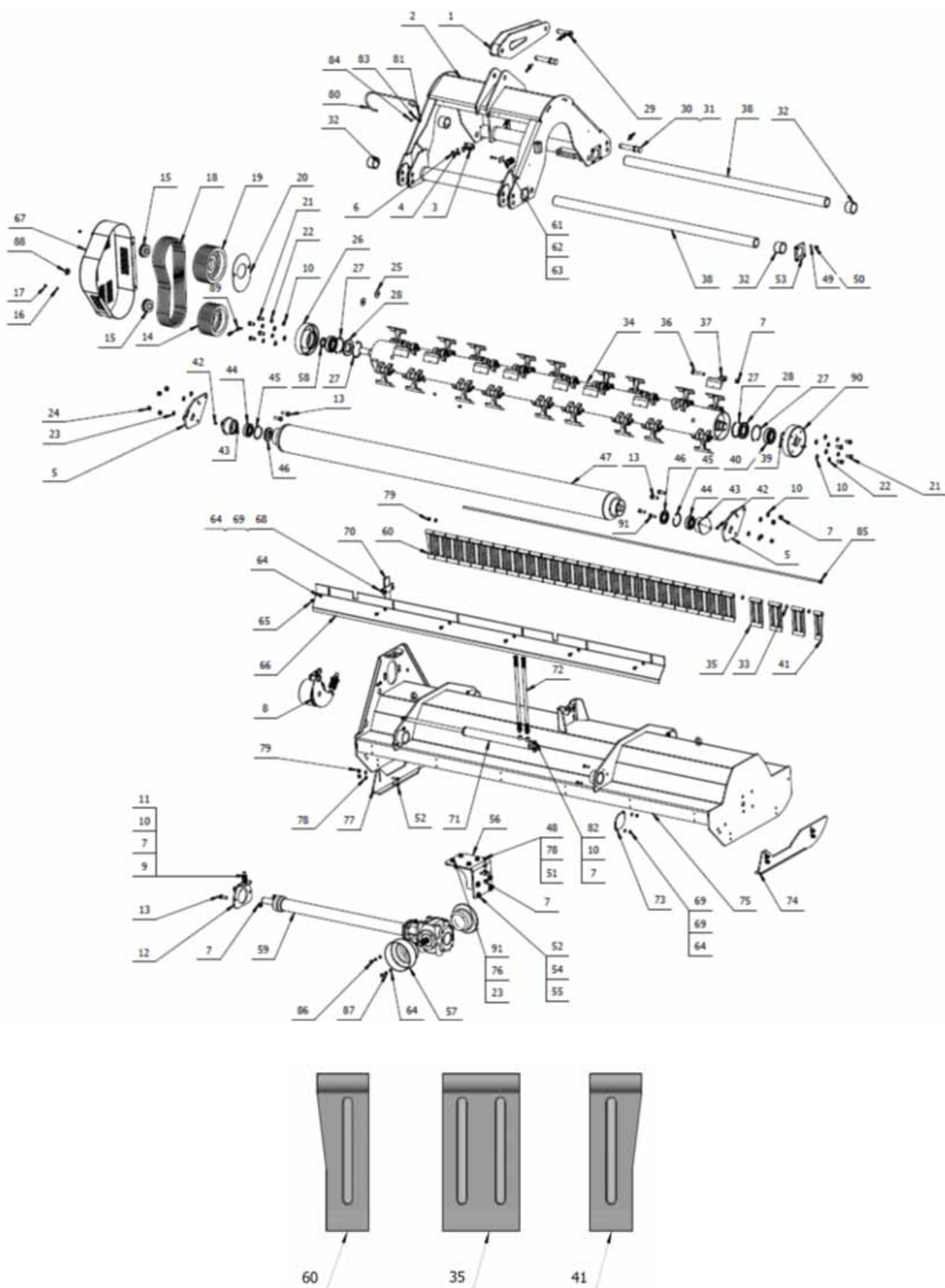
	8hrs/Daily	50hrs/Weekly	Annually
Lubricate PTO Shaft	x	x	x
Lubricate caster wheels	x	x	x
Lubricate blade spindle	x	x	x
Check gear box oil level		x	x
Clean machine			x
Lubricate and clean PTO shaft cover			x

## PTO SHAFT MAINTENANCE

The PTO shaft is designed to telescope to allow for dimensional changes as the machine goes through its operating range. A tubular guard encloses the driving components and is designed to turn relative to the driving components. The shaft should telescope easily and the guard turn freely on the shaft at all times. Annual disassembly, cleaning and lubrication is recommended to insure that all components function as intended. To maintain the shaft, follow this procedure:

1. Remove the shaft from the machine.
2. Pull shaft apart.
3. Use a screwdriver to pry the tabs out of the sleeves on each end.
4. Pull the shaft out of the plastic tubular guard.
5. Use a solvent to clean the male and female portions of the telescoping ends.
6. Apply a light coat of grease to each end.
7. Clean the grooves on each end where the tabs are located. Clean each tab also.
8. Apply a light coat of grease to each groove.
9. Insert the shaft into its respective guard and align the slots with the groove.
10. Insert the tabs through the slots and seat in the groove.
11. Check that each guard turns freely on the shaft.
12. Assemble the shaft.
13. Check that the shaft telescopes easily.
14. Replace any components that are damaged or worn.
15. Install the shaft on the machine.

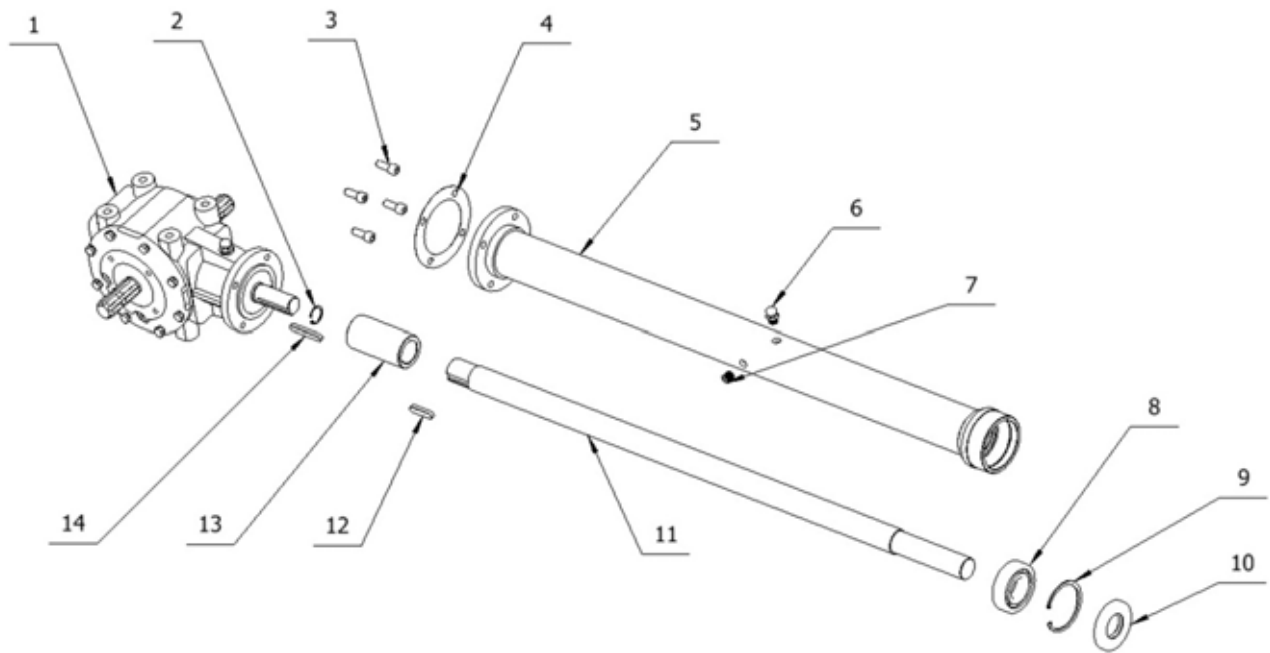
## 8. PARTS LISTS



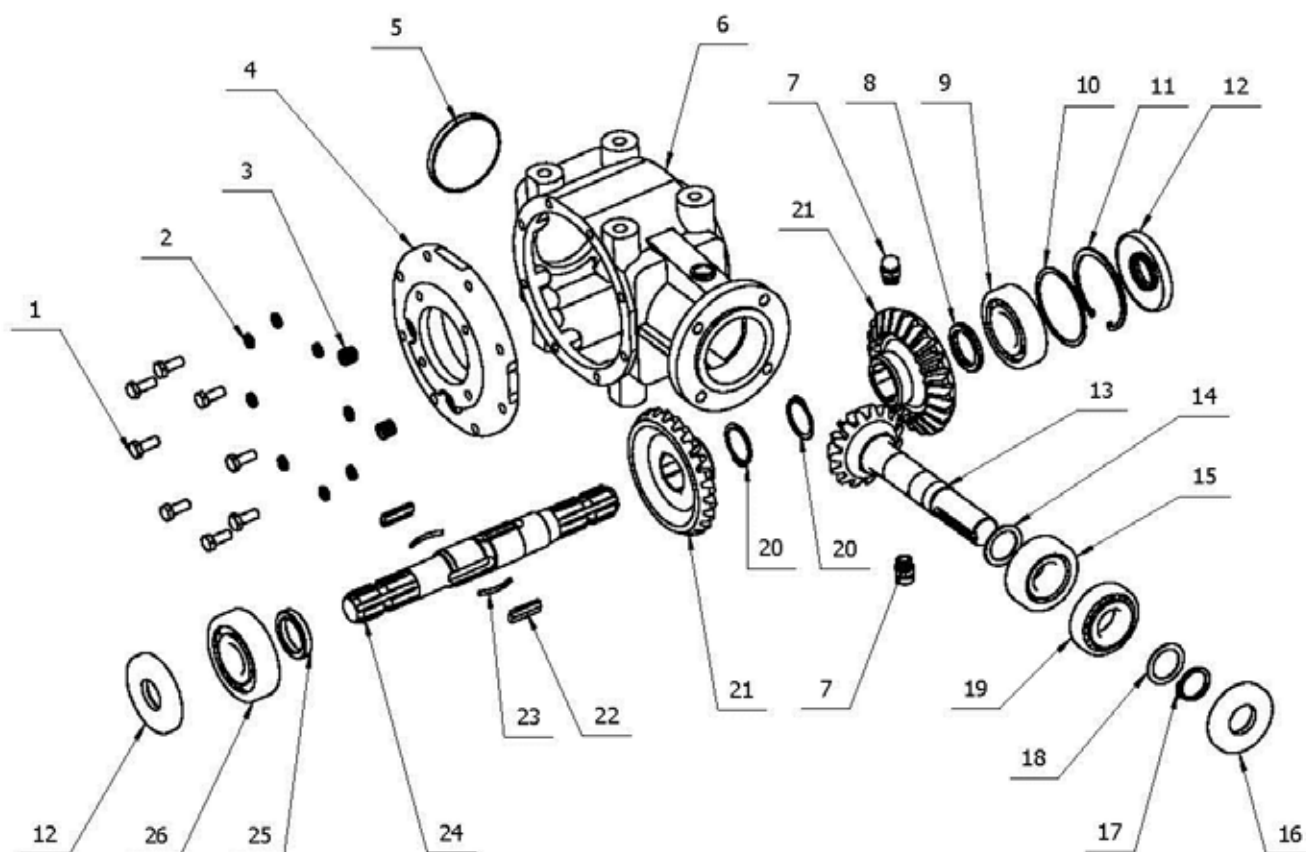
DUO 250/280/300 plus				
Item	ERP No.	Parts No.	Name	QTY
1	810110035	EFAG300-027-00	Connecting plate	1
2	810110031	EFAG300-020-00	Suspension frame	1
3	709510107	EFAG300-000-02	Pedestal	1
4	506030035	GB93-8	Spring washer	2
5	709510111	EFAG300-000-06	Roller hanging board	2
6	501011098	GB5783-M8x16	Full screw bolt	2
7	503010313	GB6184-M16	Metal locking nut	44
8	810110023	EFAG300-023-00	Tensioning wheel	1
9	501011166	GB5783-M16x90	Full screw bolt	1
10	506010059	GB97.1-16	Flat gasket	18
11	503010102	GB6172.1-M16	Thin nut	2
12	709510113	EFAG300-000-08	Adjusting plate	1
13	501011159	GB5783-M16x45	Full screw bolt	6
14	709510115	EFAG300-000-10	Small belt pulley	1
15	515010003	REACH15-40X80	Lock cap	2
16	506010055	GB97.1-8	Flat gasket	3
17	503010309	GB6184-M8	Metal lock nut	3
18	514030016	XPB1540	Belt	5
19	709510116	EFAG300-000-11	Big belt pulley	1
20	709510117	EFAG300-000-12	Belt pulley board	1
21	501011156	GB5783-M16x30	Full screw bolt	8
22	506030039	GB93-16	Spring washer	8
23	506010058	GB97.1-14	Flat gasket	8
24	503010312	GB6184-M14	Metal lock nut	4
25	506010039	GB96.1-16	Extra large flat gasket	2
26	709510034	EFAG300-009-00	Right bearing pedestal	1
27	506060203	GB893.1-110	Check ring	4
28	510020678	GB13871-FB-60X110X12	FB oil seal	2
29	805760001	1G-180.00.019	Upper suspension pin	1
30	706790181	EFAG140.014A-1	(AG200/220/250) Below suspension pin	3
31	700080010	200.56.011	Lockpin assembly	3
32	511050257	SF-2-70X75X50	Self-lubricating bearing	4
33	506010057	GB97.1-12	Flat gasket	20
34-1	809510011	EFAG300-014-00	Blade shaft (300)	1
34-2	806710011	EFAG280-014-00	Blade shaft (280)	1
34-3	809800011	EFAG250-014-00	Blade shaft (250)	1
35	710110039	EFAG300-000-14A	Board	28
36	501010783	GB5782-M16x90	Half thread bolt	34

DUO 250/280/300 plus				
Item	ERP No.	Parts No.	Name	QTY
37	709510114	EFAG300-000-09	Hammer	34
38	710110038	EFAG300-000-01a	Guide rail shaft	2
39	506060325	GB894.1-50	Check ring	1
40	511011084	GB288-21310-C	Self aligning roller bearing	2
41	710110040	EFAG300-000-15A-L	Board	1
42	509010009	GB1152-M10X1	Oil cup	3
43	809510009	EFAG300-012-00	Roller bearing pedestal	2
44	511024244	GB281-1308	Self aligning roller bearing	2
45	506060195	GB893.1-90	Check ring	2
46	510020416	CFW-50X90X10	FB oil seal	2
47-1	809510006	EFAG300-008-00	Roller (300)	1
47-2	806710009	EFAG280-008-00	Roller (280)	1
47-3	809800009	EFAG250-008-00	Roller (250)	1
48	501011136	GB5783-M12x90	Full screw bolt	1
49	506030035	GB93-8	Spring washer	16
50	501011098	GB5783-M8x16	Full screw bolt	16
51	503010100	GB6172.1-M12	Thin nut	2
52	501011128	GB5783-M12x40	Full screw bolt	12
53	710110042	EFAG300-000-20	Board	4
54	506030037	GB93-12	Spring washer	4
55	506010037	GB96.1-12	Extra large flat gasket	4
56	810110029	EFAG300-013-00a	Gear box adjustment pedestal	1
57	703400202	FM120.00.199C	PTO cover	2
58	510020677	GB13871-FB-50X62X5	FB oil seal	1
59-1	809510133	EFAG300-100-00	Transmission box (300)	1
59-2	806710018	EFAG280-100-00	Transmission box (280)	1
59-3	809800018	EFAG250-100-00	Transmission box (250)	1
60	710110041	EFAG300-000-15A-R	Board	1
61	704660020	QH TT-G3	Cover plate	1
62	704660021	QH TTPG-320	Duplex pipe clamp	1
63	501011103	GB5783-M8x40	Full screw bolt	1
64	506010056	GB97.1-10	Flat gasket	20
65	501011111	GB5783-M10x20	Full screw bolt	6
66-1	709510112	EFAG300-000-07	Roller hanging board (300)	1
66-2	706710017	EFAG280-000-07	Roller hanging board (280)	1
66-3	709800017	EFAG250-000-07	Roller hanging board (250)	1
67	810110024	EFAG300-026-00	Pulley cover	1
68	501011114	GB5783-M10x35	Full screw bolt	10
69	503010310	GB6184-M10	Metal lock thin nut	10

DUO 250/280/300 plus				
Item	ERP No.	Parts No.	Name	QTY
70	809510002	EFAG300-003-00	Board	1
71	809510007	EFAG300-010-00	Shifting cylinder	1
72	709510088	AG300-020-00	AG300 pipeline	2
73	709510110	EFAG300-000-05	Guide rail shaft cover plate	4
74	809510004	EFAG300-005-00	Left pedestal	1
75-1	809510001	EFAG300-002-00	Main body (300)	1
75-2	806710002	EFAG280-002-00	Main body (280)	1
75-3	809800002	EFAG250-002-00	Main body (250)	1
76	506030038	GB93-14	Spring washer	4
77	809510008	EFAG300-011-00	Right pedestal	1
78	506010057	GB97.1-12	Flat gasket	10
79	503010311	GB6184-M12	Metal lock thin nut	9
80	709510108	EFAG300-000-03	Hanging hook	1
81	709510109	EFAG300-000-04	Hanging rod book	1
82	501011163	GB5783-M16x65	Full screw bolt	1
83	506010034	GB96.1-6	Extra large flat gasket	1
84	501011088	GB5783-M6x16	Full screw bolt	1
85-1	809510005	EFAG300-006-00	Board hanging rod (300)	1
85-2	806710007	EFAG280-006-00	Board hanging rod (280)	1
85-3	809800007	EFAG250-006-00	Board hanging rod (250)	1
86	501011112	GB5783-M10x25	Full screw bolt	4
87	506030036	GB93-10	Spring washer	4
88	700920106	EF100.00.119	(φ28) Rubber cover	1
89	709510123	EFAG300-000-18	M10x1 Lubricating pipe	1
90	709510029	EFAG300-007-00	Left bearing pedestal	1
91	501011142	GB5783-M14x40	Full screw bolt	8



DUO 250/280/300 plus				
Item	ERP No.	Parts No.	Name	QTY
1	809510019	EFAG300-110-00	(1000rpm) Gear box	1
2	506060564	GB893.1-33	Check ring	1
3	505011444	GB70.1-M12X30	Hexagon socket cap screw	4
4	702620017	AGM200.130	Paper pad	1
5-1	809510020	EFAG300-120-00	Axle tube (300)	1
5-2	806710014	EFAG280-120-00	Axle tube (280)	1
5-3	809800014	EFAG250-120-00	Axle tube (250)	1
6	705290211	CBW-00-011B	ZG3/8 air plug	1
7	516010003	ZBT32001.3-ZG3/8-19"	Hexagon socket tapered plug	1
8	511022655	GB276-6308	Deep groove ball bearing	1
9	506060195	GB893.1-90	A check ring	1
10	510020445	GB13871-FB-40X90X10	FB oil seal	1
11-1	709510104	EFAG300-100-01	Transmission shaft (300)	1
11-2	706710016	EFAG280-100-01	Transmission shaft (280)	1
11-3	709800016	EFAG250-100-01	Transmission shaft (250)	1
12	507010101	GB1096-A-12X8X50	A flat key	1
13	709510105	EFAG300-100-02	Adapter sleeve	1
14	507010091	GB1096-A-10X8X70	A flat key	1

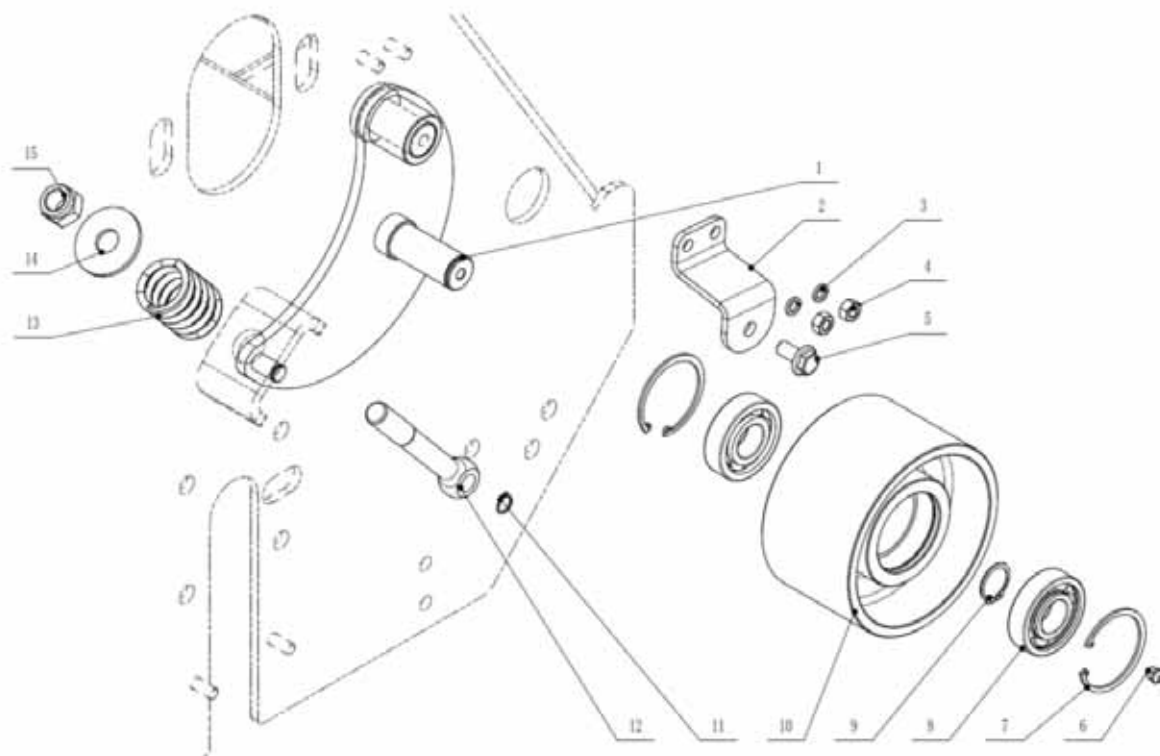


DUO 250/280/300 plus				
Item	ERP No.	Parts No.	Name	QTY
1	501011112	GB5783-M10X25	M10x25 Screw bolt	8
2	506030036	GB93-10	10 Spring washer	8
3	516010003	ZBT32001.3-ZG3/8-19"	Hexagon socket tapered plug	2
4	709510098	EFAG300-110-09	Shell cover	1
5	702650043	NFG-RCA-90X10	90X10 Blanking cap	1
6	709510094	EFAG300-110-05	311 Shell	1
7	705290211	CBW-00-011B	ZG3/8 Air plug	2
8	709510097	EFAG300-110-08	Spacer bush	1
9	511022655	GB276-6308	Deep groove ball bearing	1
10	709510100	TZDP-55-40-1	55X40X1 Adjusting pad	1
11	506060195	GB893.1-90	Check ring	1
12	510020438	CFW-35X90X10	FB oil seal	2
13	709510095	EFAG300-110-06	Output shaft	1
14	702110108	TZDP-48-35-0.2	48X35X0.2 Adjusting pad	1
15	511016538	GB297-32307	Tapered roller bearing	1
16	510020399	CFW-35X80X10	FB oil seal	1
17	506060515	JB4342-35	Check ring	1
18	701240035	TZDP-48-35-1	48X35X1 adjusting pad	1

---

19	511016489	GB297-30307	Tapered roller bearing	1
20	506060322	GB894.1-42	Check ring	2
21	709510096	EFAG300-110-07	Main gear	2
22	709510092	EFAG300-110-02	Key	4
23	709510091	EFAG300-110-01	Spring	4
24	709510093	EFAG300-110-03	Input shaft	1
25	709510099	EFAG300-110-10	Spacer bush	1
26	511022680	GB276-6407	Deep groove ball bearing	1





DUO 250/280/300 plus					
Item	ERP No.	Parts No.	Name	QTY	Remark
1	EFAG300-024-00	810110018	Tensioning wheel assembling seat	1	
2	EFAG300-023-03	710110017	Press plate	1	
3	GB93-10	506030036	Washer	2	
4	GB6170-M10	503010046	Nut	2	
5	GB5789-M12x25	501012506	Bolt	1	
6	JB7940.1-M10x1	509010009	Oil cup	1	GB1152-M10X1
7	GB893.1-72	506060188	Check ring	2	
8	GB276-6306-Z	511022135	Bearing	2	
9	GB894.1-30	506060314	Check ring	1	
10	EFAG300-023-01	710110015	Tensioning wheel	1	
11	GB894.1-15	506060301	Check ring	1	
12	GB798-M20x150	501060067	Bolt	1	
13	EFAG300-023-02	710110016	Pressure spring	1	
14	GB96.1-20	506010041	Washer	1	
15	DIN985-M20	503010767	Nut	1	

## 9. CE DECLARATION OF CONFORMITY



**Boxer Agriculture Equipment B.V.**

*A member of de Heus group*

Stougjesdijk 153 – 3271KB Mijnsheerenland – Holland

Tel: +31 186 612 333

e-mail : info@boxeragri.nl



**EG Conformiteitsverklaring**

*Volgens machinerichtlijn 2006/42/CE*



**Konformitätserklärung**

*Entsprechend der Richtlinie 2006/42/CE*



**EEC Declaration of Conformity**

*Conforming to the Directive 2006/42/CE*



**Déclaration CE de Conformité**

*Conforme à la directive de la 2006/42/CE*

Wij – Wir – We – Nous :

**Boxer Agriculture Equipment B.V.**

**Stougjesdijk 153**

**3271KB Mijnsheerenland – Holland**

Verklaren onder eigen verantwoording dat de machine:

Erklären in alleiniger Verantwortung, daß die machine:

Declare under our own responsibility that the product:

Déclarons sous notre seule responsabilité que le produit:

**Machine :** Klepelmaaier/ Mulcher / Flail mower/ Broyeur

**Type/model :** KDK / DUO / DUO Plus

**Seriennummer / Chassis number :**

**Bouwjaar / Baujahr / Year / Année :**

De machine in de verklaring voldoet aan de fundamentele veiligheids- en gezondheidseisen die zijn vastgelegd in de richtlijn van 2006/42 / EG en ter verificatie zijn geraadpleegd UNI: EN 13524: 2004, EN 754. UNI: EN 1553: 2001

Auf dass sich diese Erklärung bezieht, den einschlägigen grundlegenden Sicherheit und Gesundheitsanforderungen EG-Richtlinie 2006/42/CE, UNI:EN 13524:2004, EN 754, UNI:EN 1553:2001 berücksichtigt

To which this certificate applies, conforms to the basic safety and health requirements of EEC Directives 2006/42/CE and following , we have consulted UNI:EN 13524:2004, EN 754. UNI:EN 1553:2001

Faisant l'objet de la déclaration est conforme aux prescriptions fondamentales en matière de sécurité et de santé stipulées dans la Directive de la 2006/42/CE et consultées pour vérification UNI:EN 13524:2004, EN 754. UNI:EN 1553:2001

**Mijnsheerenland , 19/08/2019**

**De gevolmachtigde:**

Der Bevollmächtigte:

The legal representative :

Le représentant légal:

