

All Rights Reserved

Materials and specifications are subject to change without notice.
Featured machines in photos may include additional equipment.
See your XCMG dealer for available options.



XCMG European Sales and Services GmbH
Address: Europark Fichtenhain B 4, 47807 Krefeld,
Deutschland
Tel: +49 (0) 2151 8206 890
Fax: +49 (0) 2151 8206 899
E-Mail: info@xcmg-ess.de

XUZHOU CONSTRUCTION MACHINERY GROUP IMP. & EXP. CO., LTD
Address: No.1, Tuolanshan Road, Xuzhou Economic Developing Zone, Jiangsu,
China 221004
Tel: +86(0) 516 8773 9703
Fax: +86(0) 516 8773 9230
E-Mail: europe@xcmg.com

www.xcmg.com/en-ap



SECURITY, GREEN AND INTELLIGENCE

XC6-2506E



Rated operating load: 2500kg
Maximum lifting height: 6000mm





INTRODUCTION OF XCMG

XCMG, as a leading enterprise valued of 100 billion RMB, with the largest scale, the best technology level, the largest export volume, and high competitiveness and influence in China's construction machinery industry, has been occupying the first place in China's construction machinery industry for decades, and it now ranks the third in the world industry and the 395th among the world's top 500 brands.

The main products by XCMG consists of 16 categories of equipment such as hoisting machinery, excavation machinery, concrete machinery, mining machinery, earth-moving machinery and road machinery, etc., as well as three categories of key components such as hydraulic system, transmission system and electric control system. Among above-mentioned, hoisting machinery ranks first in the world, and package solution of road construction and maintenance machinery, piling machinery and concrete machinery are among the first-class bloc in the world.

XCMG has accumulated more than 8000 approved patents, including more than 1900 invention patents and more than 130 PCT international patents. Entities of R&D centers, manufacturing plants or KD factories are in operation in more than 10 countries such as Germany, the United States, Brazil and India, XCMG has also acquired three European enterprises including Schwing in Germany. The Brazil manufacturing plant, with an investment of 350 million dollars to build up factories on a bare ground, has become a model of economic cooperation between China and Brazil. At present, XCMG products are exported to 187 countries and regions, covering 97% of the countries along "The Belt and Road" area. In export business to 35 countries, XCMG's proportion ranks NO. 1, with a steady first place within Chinese industry in terms of annual export volume and overseas income.

XCMG IN EUROPE

Since 1990s when XCMG was already a known brand within the industry in Europe, XCMG has been one of the major international manufacturers supplying products and service across the Continent. With its rapid development in recent years, XCMG is gradually building up an all-round network including: R&D department; local distribution, supply chain management and an integrated customer services and training center.

At present, XCMG has 3 subsidiaries in operation, with more than 100 multinational employees in Europe:

- ERC XCMG European research center GmbH
- EPC XCMG European purchasing center GmbH
- ESS XCMG European sales and services GmbH

XCMG is also holding a resource of more than 100 branches by local dealers throughout the Europe, generating a whole value chain that is serving the entire European market, including sales, service, financing, used equipment recycle, etc.

We actively and continuously implement our globalization strategy. Our first-class international team has many years of professional experience and excellent cross-cultural management capability.

With a strong combination of expertise and practical experience in a multicultural context, we create real value and provide a high level of return on investment to our European customers.



Product Overview

- XC6-2506E is a compact lightweight electrical telescopic handler independently designed and developed by Xuzhou Construction Machinery Group Co.,Ltd.(XCMG),and also the first electrical telescopic handler in China.As an outcome of gearing into the global trend of construction machinery electrification,it combines the proven technologies of electrical drive and the cost advantages of key parts and components,aiming at breaking into the high-end markets of Europe and North America.Featured by compact structure,good maneuverability,zero carbon emission and low noise,it is suitable for operation in enclosed space,livestock shed,vegetable processing plant,or other places with strict requirements for pollutant emission and noise,like the downtown area.



Advantageous Performance

1、Clean energy

It emits no pollutants and only low noise,suitable for operation in places with strict requirements for noise.Requiring no engine maintenance,its operation cost is low compared with others.

2、Spacious cab

A 930 mm-wide cab provides a big space.The air conditioner and ventilation system ensure moderate temperature and condition in the cab for the operator's comfort.The cab is also protected from dust entering during operation by the negative pressure and air filter papers provided by the ventilation system.



3、Excellent capacity and versatility

When configured with a fork,the handler will have a maximum operating height of 6 m and a maximum extension of 3.45 m.With a rated load of 2.5 t,the handler carries a load of 2.0 t at its maximum operating height and a load of 1 t at its maximum extension.It shows excellent capacity in operation.

4、Good speed from high-power & dual-motor drive system

The high-power dual-motor drive system adopted provides sufficient propelling and fast movement,with a maximum unladen speed of 15.5 km/h and a maximum laden speed of 14 km/h.



Advantageous Performance

5、Large battery capacity and long endurance

Both the 80 V/412 Ah lithium battery make it a leading power within industry and the energy recovery from accelerator pedal releasing contribute to its remarkable endurance for 6–8 hours of efficient operation.

6、Multiple operation modes

Two driving gears and three operating gears are available and ready for any combination thereof,thus meeting customers'various demands and saving more energy.



7、Maintainability

The wide side door and tilt-up engine hood make a better access to the battery control system,air conditioner system,D-C,fuse box and alike when needed for easier inspection,maintenance and repair.

8、Various charging modes

An on-board charger is included in the standard configuration.There is also optional fast charger which allows full-charging in 2 hours.

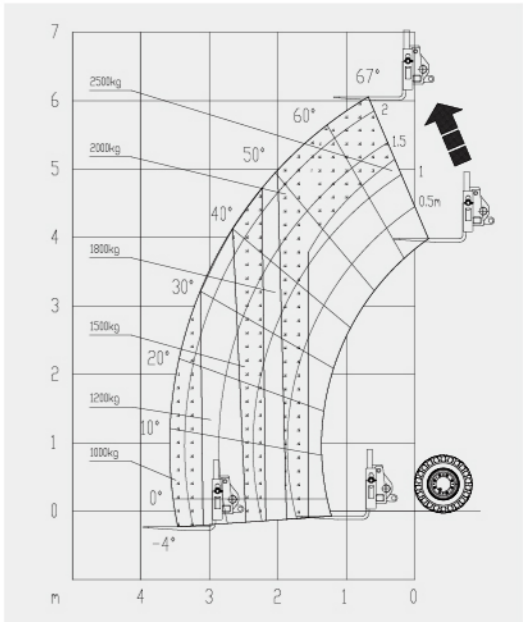
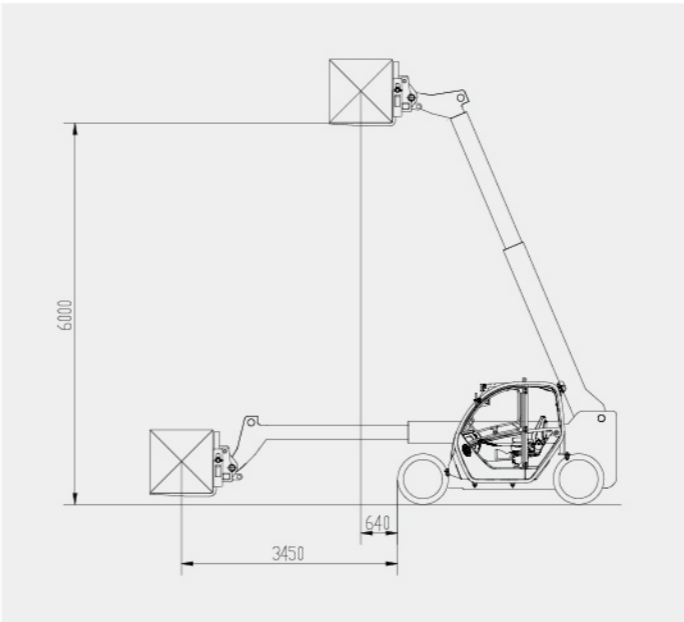
9、Aesthetic appearance

The aesthetic exterior and the plump outline of the machinery build up an internationally-recognized beauty,and it is patented.



The Main Functions

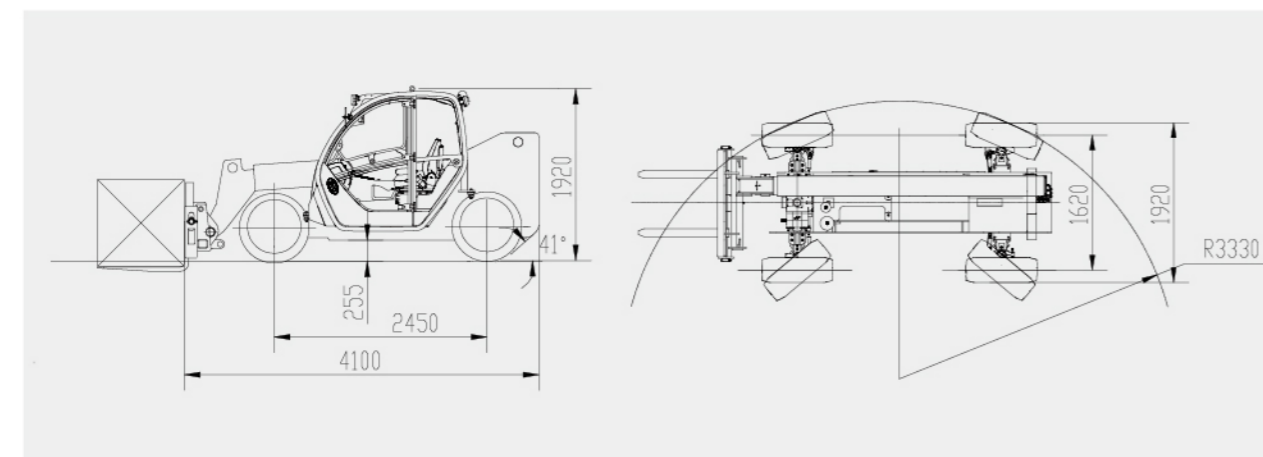
S/N	Item name		Parameter value
1	Rated operating load		2500 kg
2	Operating mass		5300 kg
3	Maximum lifting height (to upper plane of fork)		6000 mm
4	Effective load at the maximum lifting height		2000 kg
5	Reach distance at the maximun lifting height		640 mm
6	Maximum reach distance (arm level, load center to front end of tire)		3450 mm
7	Effective load at the maximum reach distance		1000 kg
8	Load center distance		500 mm
9	Braking distance		≤5.6 m
10	Minimum ground clearance (frame)		255 mm
11	Wheelbase		2450 mm
12	Tread		1620 mm
13	Minimum turning radius (outer side of tire)		≤3330 mm
14	Work device	Luffing time (rising)	≤9.5 s
		Luffing time (falling)	≤4.2 s
		Second arm stretching-out time	≤8.2 s
		Second arm retracting time	≤4.3 s
		Fork arm carrier forward tiling time	≤3.5 s
		Fork arm carrier backward tiling time	≤2.6 s
15	Telescopic arm luffing angle		-4° ~ 67°
16	Range of inclination angle of fork arm carrier (arm level)		-12° ~ 114°
17	Maximum speed		15.5km/h
18	Battery	Type	Lithium battery
		Voltage	80 V
		Capacity	412 Ah
19	Tire specification		12-16.5
20	Overall dimension of complete machine, mm		Length 4100 × width 1920 × height 1920, mm





Main Technical Parameters

S/N	Function	Description
1	4WD	Four-wheel drive
2	Three steering modes	Two-wheel, four-wheel or crab steering, flexible driving, small turning radius
3	Locked front axle, floating rear axle	Front axle is fixed on the frame, rear axle can float within the range of $\pm 10^\circ$, which ensures the safety and toe place adaptability of the completed machine
4	Torque limiter automatic limiting system	Overload alarm is provided to prevent the arm from acting in more dangerous direction, thus the safety is higher.
5	Ergonomic ROPS and FOPS cab	FOPS and ROPS certified cab; Electric drive handle operating all actions with one hand, air conditioner, ventilation system, and front + right + rear defrosting, improve the driver comfort and make the design more humanized
6	Intelligent braking system	(1) Parking brake is released automatically after shifting the gear and pressing the accelerator pedal; (2) Parking brake is triggered automatically in 5s after the driver leaves the seat; (3) After the machine is shut down, the parking brake is applied automatically to disconnect the walking system, for the purpose of higher safety.
7	Dual protection of movable arm safety	In the configuration of the handle lock at the same time also equipped with movable arm safety bar, to improve the safety of under arm maintenance work
8	Main switch of electrical system	The switch of electrical system can be disconnected in case of a long idle time, so as to prevent the battery from power loss and damage
9	Fully sealed waterproof connectors	Electrical components are more reliable, with IP65 protection rating
10	Various charging modes	The standard on-board charger can fully charge the battery in 8-10h, and the optional international standard REMA quick charger can fully charge the battery in 2 hours.
11	Pedal brake energy recovery function	Energy is recovered automatically when releasing the accelerator pedal, so as to increase the operating hours of the machine
12	Multiple operation modes	Eco: Low energy consumption, save energy resource, slightly reduce the operation performance of machine; Power: Optimal performance, selected when it is necessary to use the telescopic arm or the maximum gear of gearbox
13	LCD control panel	It displays information like steering mode, battery capacity, alarm, walking speed, etc.
14	Handle lock	The function can be triggered by pressing the button or triggered automatically after the driver leaves the seat, in order to prevent misoperation
15	Tipping bucket lock	It ensures that the bucket will not be tipped automatically during walking, for the purpose of higher safety.



Optimum Services, XCMG Guaranteed



XCMG-approved attachments



Genuine parts



Extension of warranty



Financial solutions



Maintenance contract



Telematics

Professional Integrated Complete Solutions

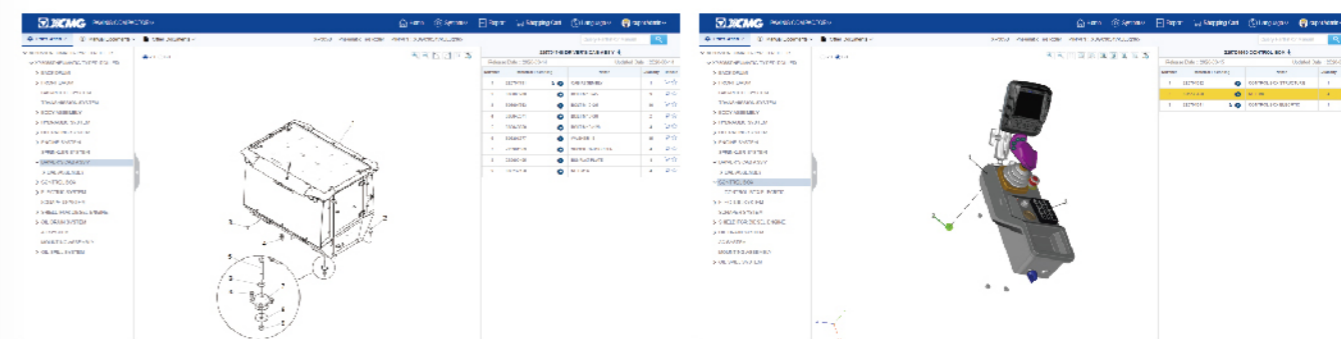
The XCMG group has built a strong reputation based on the quality, reliability, and durability of its construction machinery. What's more, XCMG has gradually established a service network to constantly provide its local integrated and highly efficient complete solutions for all customers.

Full Range of Services Ready for you

In order to respond to your needs as fast as possible, XCMG experts are on their way to your job site from one of our facilities near you. A full range of services is available in order to reduce your total cost of ownership and increase your revenue.



XCMG Global Spare parts System



XC6-1056VN



XC6-4517K



XC6-3514K



XC6-3007K



XC6-2506E

