

All Rights Reserved

Materials and specifications are subject to change without notice.
Featured machines in photos may include additional equipment. See your XCMG dealer for available options.



Hydraulic Excavators **XE35U-E**



XCMG European Sales and Services GmbH

Address: Europark Fichtenhain B 4, 47807 Krefeld, Deutschland

Tel: +49 (0) 2151 8206 890

Fax: +49 (0) 2151 8206 899

E-Mail: info@xcmg-ess.de

XUZHOU CONSTRUCTION MACHINERY GROUP IMP. & EXP. CO., LTD

Address: No. 1, Tuolanshan Road, Xuzhou Economic Developing Zone, Jiangsu, China 221004

Tel: + 86(0) 516 8773 9703

Fax: + 86(0) 516 8773 9230

E-Mail: europe@xcmg.com

www.xcmg.com

Rated Power: 22 kW
Operating Weight: 4300 kg
Standard. Bucket Capacity: 0.12 m³





INTRODUCTION OF XCMG

XCMG, as a leading enterprise valued of 100 billion RMB, with the largest scale, the best technology level, the largest export volume, and high competitiveness and influence in China's construction machinery industry, has been occupying the first place in China's construction machinery industry for decades, and it now ranks the third in the world industry and the 395th among the world's top 500 brands.

The main products by XCMG consists of 16 categories of equipment such as hoisting machinery, excavation machinery, concrete machinery, mining machinery, earth-moving machinery and road machinery, etc., as well as three categories of key components such as hydraulic system, transmission system and electric control system. Among above-mentioned, hoisting machinery ranks first in the world, and package solution of road construction and maintenance machinery, piling machinery and concrete machinery are among the first-class bloc in the world.

XCMG has accumulated more than 8000 approved patents, including more than 1900 invention patents and more than 130 PCT international patents. Entities of R&D centers, manufacturing plants or KD factories are in operation in more than 10 countries such as Germany, the United States, Brazil and India, XCMG has also acquired three European enterprises including Schwing in Germany. The Brazil manufacturing plant, with an investment of 350 million dollars to build up factories on a bare ground, has become a model of economic cooperation between China and Brazil. At present, XCMG products are exported to 187 countries and regions, covering 97% of the countries along "The Belt and Road" area. In export business to 35 countries, XCMG's proportion ranks NO. 1, with a steady first place within Chinese industry in terms of annual export volume and overseas income.

XCMG IN EUROPE

Since 1990s when XCMG was already a known brand within the industry in Europe, XCMG has been one of the major international manufacturers supplying products and service across the Continent. With its rapid development in recent years, XCMG is gradually building up an all-round network including: R&D department; local distribution, supply chain management and an integrated customer services and training center.

At present, XCMG has 3 subsidiaries in operation, with more than 100 multinational employees in Europe:

- ERC XCMG European research center GmbH
- ESS XCMG European sales and services GmbH
- EPC XCMG European purchasing center GmbH

XCMG is also holding a resource of more than 100 branches by local dealers throughout the Europe, generating a whole value chain that is serving the entire European market, including sales, service, financing, used equipment recycle, etc.

We actively and continuously implement our globalization strategy. Our first-class international team has many years of professional experience and excellent cross-cultural management capability.

With a strong combination of expertise and practical experience in a multicultural context, we create real value and provide a high level of return on investment to our European customers.



► **ECOLOGICAL AND ECONOMICAL:**

Electric drive, lower noise and no pollution
Charging period, long working time

► **MULTIPLE APPLICATIONS:**

Short tail design and boom swing function can achieve flexible operation in confined space.
Multiple additional configurations to adapt to a variety of operating requirements

► **COMFORTABLE OPERATING EXPERIENCE:**

Air conditioner and heater to ensure the appropriate temperature
Toughened glass cockpit with good safety view
Detailed design concept improves comfort

► **EXCELLENT AFTER-SALES SERVICE:**

Global after-sales service system and quick response mechanism
Real-time technical consultation and maintenance

► **CONVENIENT MAINTENANCE:**

Easy maintenance design, daily checks and regular service points are easily reached via the tiltable cabin

► **SAFE AND DURABLE:**

Integrated body design
Strengthened structure and stress dispersing
Upgrade undercarriage to improve load bearing performance





Excellent Performance and Fuel Economy

► Power system

It is battery-powered, zero-emission and pollution-free. Compared with the traditional fuel-type engine, it is more environmental friendly and economical, which can save users a lot of cost. At the same time, the use of electric drives is also an important sign of innovation in the industry.



► Multiple applications

Compact short tail design with boom swing function ensures that the machine can work in narrow working conditions.

The left and right boom swing angle is respectively 75° and 50°, it can realize complex operation together with upper structure slewing to ensure that the digging is parallel with wall surface in narrow space through the cooperation of upper structure slewing so as to easily deal with various operating conditions.



Operational Comfort

► Large Operator Environment with Ergonomic Control Layout

Equipped with a large space cab, with heating and cooling air conditioning, seat belts, cup holders and backup power, etc., which greatly improves the comfort and convenience of operation. Visual dashboard monitors the whole machine status in real-time, ensures more smooth operation





Easy Access for Maintenance

Large area of toughened glasses with high strength are equipped on the cab, which ensures the strength meanwhile improves vision, headlamp is equipped on the roof of the cab to ensure accurate and safe operation at night.
Strengthened boom and arm, adjusted structure and stress dispersing will greatly improve service life.
With X-frame undercarriage structure, reinforced plate and enlarged box cross section, its bearing performance is greatly improved.



► Maintenance and service

The cab can be tilted forward for 35°,main electrical device, main valve, slewing motor and central rotary joint are easy to be maintained.
After the cab is tilted, the generator, start motor, muffler, electric and hydraulic systems can be maintained rapidly cooperated with fully-opened rear hood, there is no dead angle within 360 degrees for maintenance of whole machine.
When the right hood opened, coolant filling port, auxiliary water tank, power master switch, battery can be maintained conveniently, which saves both time and labour.
A wide range of after-sales service system, quick-response rescue mechanism to ensure that you use at ease



Technical Specifications

■ Power System

	XE35U-E
Battery Model	173Ah_405.72V_1P126S
Electricity	70.18 kW/h
Voltage	405 V
Charge time(Fast/Slow)	1/6 h
Liquid cooling	√
Motor output	22/2400 kw/rpm
Rated torque	87.5 N.m

■ Main performance

	XE35U-E
Travel Speed	3.6/2.2 km/h
Swing Speed	8.5 r/min
Gradeability	≤30°
Ground Pressure	38.5 kPa
Bucket Digging Force	28.6 kN
Arm Digging Force	20.3 kN
Maximum Tractive Force	31.6 kN

■ Hydraulic system

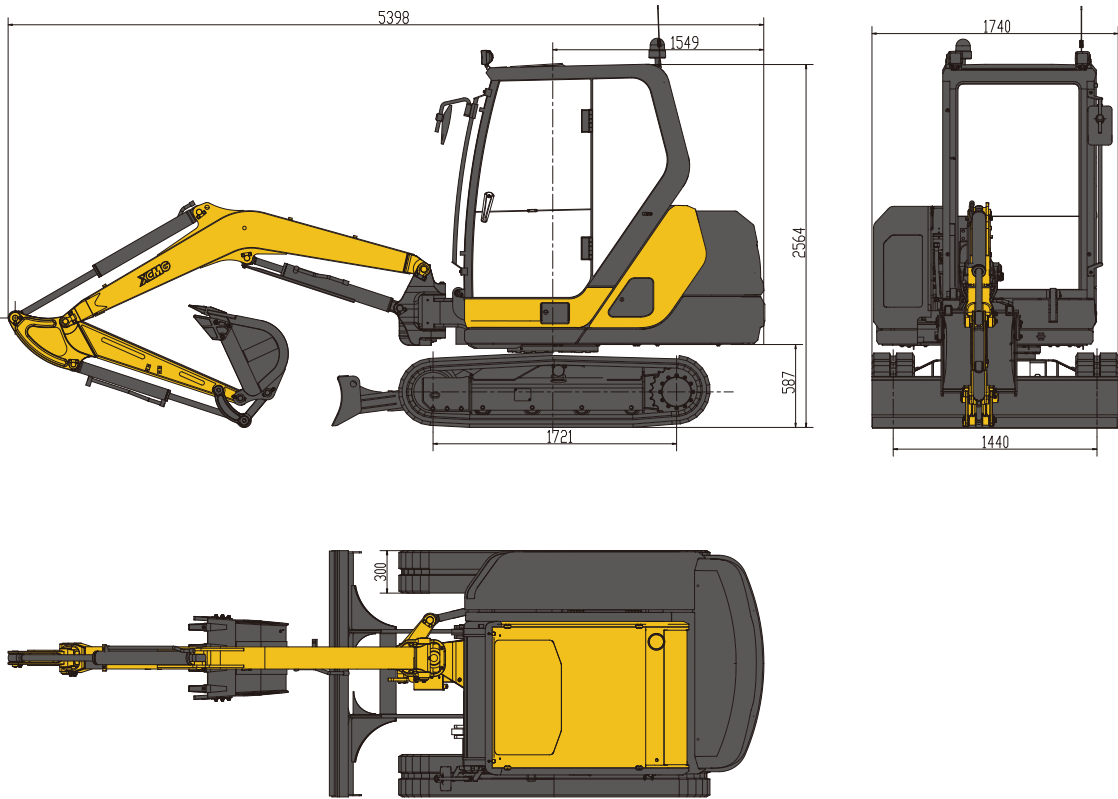
	XE35U-E
Main Pump	/
Rated Flow of Main Pump	108 L/min
Main Safety Valve Pressure	23 MPa
Travel System Pressure	21 MPa
Swing System Pressure	16.7 MPa
Pilot System Pressure	3.9 MPa

■ Oil Capacity

	XE35U-E
Hydraulic Tank Capacity	45 L



Dimensions & Working Range

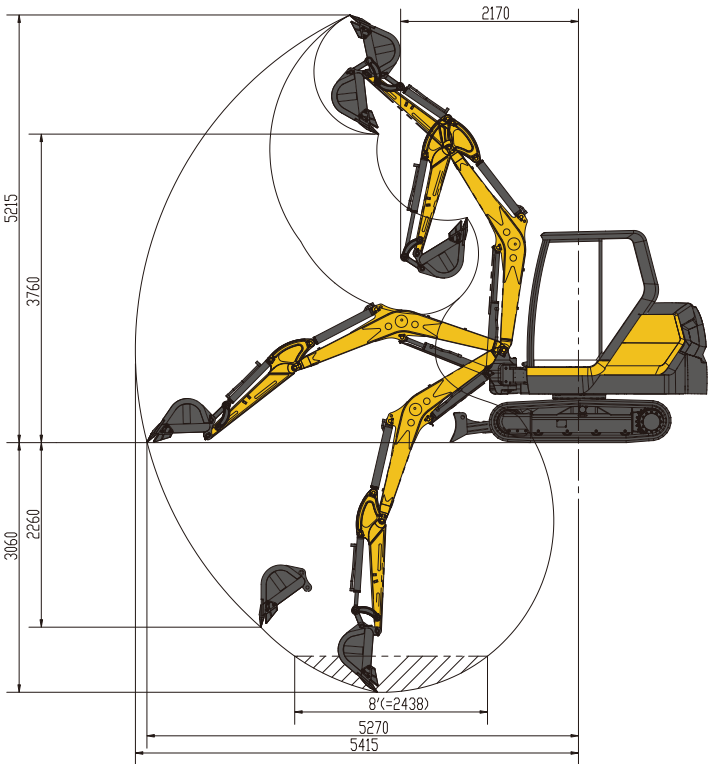


■ Dimensions

XE35U-E		
A	Overall Length	5348mm
B	Overall Width	1740mm
C	Overall Height	2564mm
D	Width of Platform	1448mm
E	Track Length	2215mm
F	Total Width of Chassis	1740mm
G	Track Shoe Width	300mm
H	Crawler base	1721mm
I	Track Gauge	1440mm
J	Counterweight Clearance	587mm
K	Min.Ground Clearance	297mm
L	Track Height	537mm
M	Min.Tail Swing Radius	1549mm



Dimensions & Working Range



■ Working Range

XE35U-E		
A	Maximum Digging Height	5215mm
B	Maximum Dumping Height	3760mm
C	Maximum Digging Depth	3060mm
D	Maximum Depth Cut for 2240mm(8 ft) Level Bottom	2875mm
E	Maximum Vertical Wall Digging Depth	2260mm
F	Maximum Digging Radius	5415mm
G	Minimum Swing Radius	2170mm

■ Standard Equipment

XE35U-E		
	Length of boom	2560mm
	Length of arm	1350mm
	Bucket capacity	0.12m³

Optimum Services, XCMG Guaranteed



XCMG-approved attachments



Genuine parts



Extension of warranty



Financial solutions



Maintenance contract



Telematics

Professional Integrated Complete Solutions

The XCMG group has built a strong reputation based on the quality, reliability and durability of its construction machinery. What's more, XCMG has gradually established a service network to constantly provide its local integrated and highly efficient complete solutions for all customers.



Full Range of Services Ready for you

In order to respond to your needs as fast as possible, XCMG experts are on their way to your job site from one of our facilities near you. A Full range of services is available in order to reduce your total cost of ownership and increase your revenue.

XCMG Global Spare Parts System



Mobile cranes



Excavators



Aerial work platforms



Wheel loaders



Road machinery

