

Electric Terminal Tractor

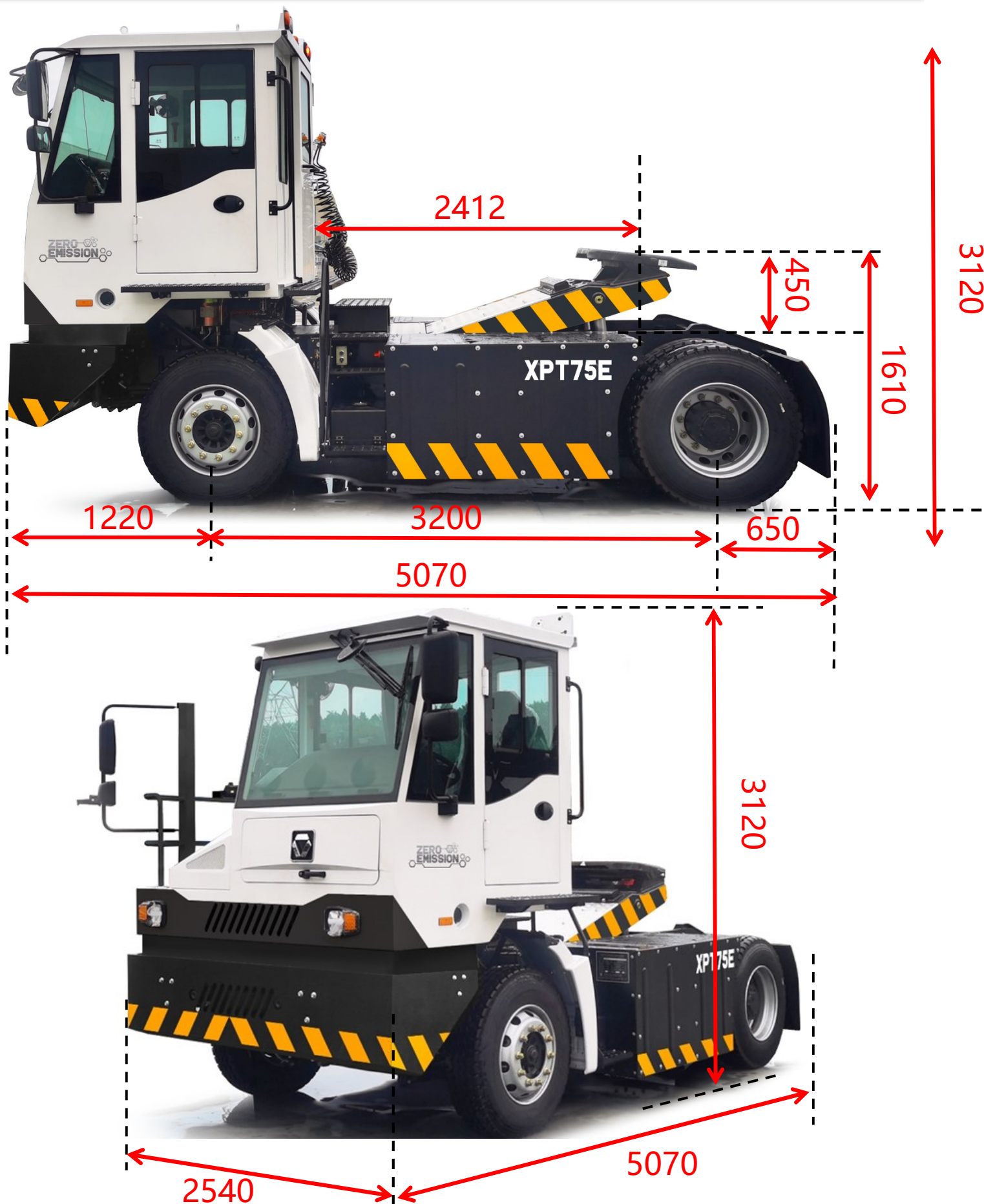
XPT75E



Contents

Contents	Page
Dimensions	3
Technical specifications	4
Main Technical Data	5~6
Main parts list	7
Notes	8

Dimensions



XCMG—XPT75E

Technical specifications

standard configuration

Saddle lift hydraulic system	The main hydraulic system consists of a hydraulic oil tank, a hydraulic pump, a control valve, and a lifting cylinder; the saddle lifting uses a Casper or Bomke 45 cc gear pump, driven by a motor; the Xuli secondary lifting cylinder has a short installation distance and Long reach.	Hydraulic system	Using Casper gear pump and parker valve parts, the system has steering, lifting and other functions. Equipped with high performance oil filter and Hydraulic tank.
Cab	Offset panoramic cab with wide field of vision, upper and lower left side and escape door/rear sliding door; Equipped with airbag shock-absorbing suspension seats, three-point safety belts, integrated headrests, and the steering gear is integrated with a shift handle and combination switch; the steering gear can be adjusted forward and backward; Four-point airbag suspension, safe, comfortable and shock-absorbing.	Electrical System	Using international famous 588V BYD lithium iron phosphate battery. The battery system is equipped with the industry's mature BMS battery management system. Fixed and mobile charging with different power options Pile, suitable for 380V power supply, easy to use; 24V low voltage electrical system, 4-way CAN bus control, 2 Battery, negative ground. Driving lights: front of vehicle 2 headlights, 2 turn signals; 2 turns at the rear of the vehicle lights, 2 brake lights, 2 reversing lights. Work light: driving 2 working lights on the top of the cab and 2 working lights on the rear of the vehicle lamp. Warning lights: 1 hazard alarm on top of cab lamp.
AC	High-power, fully automatic heating and cooling air conditioner.	Safety devices	Real-time leakage monitoring and active protection, current and voltage overflow Load protection, fire extinguishing system, long-range reversing radar 1 x 2kg fire extinguisher.
Motor	CRRC's 200kW single motor solution uses a horizontal suspension placement, four shock absorbers arranged; Permanent magnet synchronous motor, large output torque, high efficiency and low noise Low and maintenance-free; Peak power: 310kW; Peak torque: 3800Nm.	Frame	The torsion-resistant large-section frame structure adopts high-strength Welded from high-grade steel.
Power battery pack	The mature lithium iron phosphate battery in the industry has high energy density and Long cycle life and good safety. Power battery pack Voltage: 588V; Power battery pack capacity: 289kWh.	The 5th wheel	Pneumatic automatic saddle, height adjustable, minimum height is 1160mm adjustment range 450mm. Maximum saddle top In the up position, the distance between the center of the saddle and the rear end of the cab is 2412mm; add alarm device, height and angle limiter. There are two options for lifting: pneumatic and manual.
Suspension	Front axle leaf spring suspension, rear axle air suspension.	Axle	Front axle - Hande monolithic forged I-beam, using drum type Brakes, single chamber air chamber, no parking brake; Rear axle—Hande 30t load drive axle, using drum brake Device, double chamber air chamber.
Brake	Dual circuit service brake; Low pressure automatic alarm; ABS function.		
Steering	Fully hydraulic power steering.		

standard configuration

Battery holder

The upper two floors are prefabricated, making it easy to remove and repair the battery; Arranged symmetrically left and right, connected to the frame through bolts; The plate structure is simple and clear, while increasing the internal space and shrinking Small form factor.

Tyre 11R22.5.Pneumatic tires

Main Technical Data

No.	Item	Unit	Parameter	
1	Dimensions	length	mm	5070
		width	mm	2540
		height	mm	3120
2	Wheelbase	mm	3200	
3	Tread	front	mm	2040
		rear	mm	1864
4	Tractor seat height from ground	mm	1160	
5	Saddle lead distance	mm	200	
6	Minimum turning radius	m	6.6	
7	Maximum gradeability (empty/heavy load)	%	35/8	
8	Maximum standing slope	≥%	20	
9	Dead weight	kg	10500	
10	Maximum allowed total weight	kg	75000	
11	Lifting ability	t	≥25	
12	Saddle lift height	mm	450	
13	Speed(empty/reloaded)	km/h	45/25	
14	Power Battery	Manufacturer/Model	—	BYD 6B30/2B31
		Vehicle power	kWh	289
		Power battery capacity	Ah	491
		Voltage platform	V	588.8
		Distribution form	—	both sides
15	Motor	Type	—	Permanent magnet synchronization
		Manufacturer/Model	—	CRRCC TZ400
		Rated power/peak power	kW	200/310
		Rated torque/max torque	Nm	1800/3800
		Rated speed/peak speed	r/min	1061/2800

No.	Item		Parameter	
16	Drive axle	Manufacturer/Model	Hande HD911 drive axle	
		Main reducer speed ratio	11.98	
		Brake type	Drum type	
		differential lock	Axle difference, wheel difference	
17	Drive form	pure electric	4x2	
18	Front axle	Manufacturer/Model	Hande HD900 steering axle	
		Brake type	Drum type	
19	wheel	wheel hub	8.25	
		tire	11R22.5	
20	suspension	front	type	Vertical multiple leaf springs
			Center distance	1200mm
		steel leaf springs	9	
	rear	type	air suspension system	
21	Braking system	Fixed work stress		1MPa
		Service brake system		Dual circuit air pressure brake
		Braking force adjustment		ABS
		Parking brake system		Spring energy storage air brake
		Auxiliary braking system		Electric assist/brake energy recovery
22	Electrical System	Line form		CAN-BUS
		Voltage		24V
		Battery capacity		180Ah
23	Cab	Type	Offset	
24	Frame	Type	All steel welded frame	
25	Endurance	mileage/time	Port working conditions 120km/18h	
26	Charging	type/time	China standard/European standard, double gun DC/60min	
27	The fifth wheel	Pneumatic automatic saddle	Tangshan Longquan traction pin diameter 50#	
28	Protection level	EIC System	IP67	

Main parts list

Part	Configuration	Remarks
CE certification	●	
Electric horn	●	
Air horn	●	
GPS	●	
LCD Monitor	●	
USB interface	●	
24V backup power supply	●	
power steering	●	
Wheel differential locking function	●	
Saddle light	●	
Cab dome light	●	
Emergency stop function	●	
Cab lift	●	
speaker	●	
roof warning light	●	
Integrated rocker switch (include reserve	●	
ABS	●	
Gap detection	●	
sunshades	●	
PTO	●	
safety hammer	●	
cup holder	●	
24V power backup socket	●	
Reverse image	○	

note: ○ option ● standard

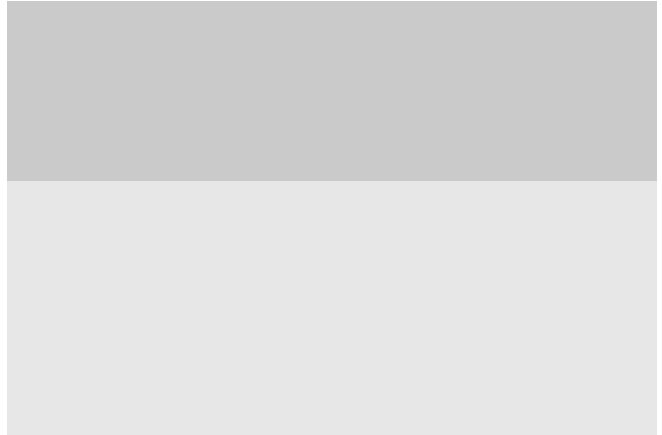
Notes

1. This manual is for reference only. All information is for illustration only and should not be relied upon. It is used to operate an eccentric tractor. For instructions on the correct operation of the vehicle, please see operation Manual.

2. The tilt-head tractor is a non-road vehicle, and the driving of the vehicle must comply with the local regulations, local traffic rules and regulations. When moving a vehicle over a long distance, it must use other vehicles for hauling, taking into account the vehicle's gross weight, axle load and contour size restrictions.

3. The tilt-head tractor must work on a solid ground, and the ground must be loaded with heavy loads. The slope must not be greater than 5 %.

4. When the tilt-head tractor is operating, the wind force must not exceed level 6. In Youfengtiao When working under conditions, you must carefully observe and pay attention to wind speed and equipment status. And working environment and other aspects.





地址: 中国江苏徐州市经济开发区诚意路 99
号 Add: No.99 Chengyi Road Xuzhou Jiangsu
China **电话(Tel):** +86-516-83462242/83462350
质量监督电话(Quality Inquiry Tel): +86-516-87888268
备件电话(Spare Parts Tel): +86-516-83461542 **邮编**
(Post Code): 221004 **网址(Web):**
www.xcmg.com/qizhongji

服务热线 Service Tel

400-110-9999

400-001-5678

本印刷品不属于合同。出于产品不断改进的需要，我们保留对产品型号、参数、配置进行变更的权利，恕不另行通知。图片仅供参考，具体产品以实物为准。图片中产品可能并非标准配置，部分部件可能需要另行购置。办理牌照和上路行驶需遵守当地法规。

This print does not belong to the contract. We reserve the right to modify the design (such as product model, parameters and configuration) without notice for improvement. The pictures are just for reference. The product in the picture may not be standard configuration. Some parts need to be purchased separately. Conform to the local laws for license application and road traveling.